



# Shelving and Racks

## Available Standard Colors



Textured Putty



Textured Dove Gray



Textured Black



Textured Safety Yellow



Textured Cherry Red



Textured Regal Blue



Mirror Silver  
(Wire Shelving Only)



Smooth Office Gray



Smooth Reflective White

## Design Benefits & Features

Industry leader in structural integrity.

Exclusive V-Grip™ compression design.

Precision engineered for reliable performance.

Flexible selection of standard components.

System components are adjustable for convenient reconfiguration.

Durable enamel paint finish.

Accommodates high-rise and multi-level applications.

## Space Utilization Advantages

V-grip with modular drawers increases small parts storage density.

V-grip on mobile aisle eliminates wasted aisle space.

Double deck V-Grip uses wasted overhead space.

## Market Applications

Manufacturing - parts/supplies, maintenance, R and D, tool room.

Automotive - parts department, service areas, bulk parts, archival records.

Education - athletic department, maintenance, supplies.

Retail - backroom storage, merchandise display.

Government - military bases, vehicle & flight maintenance, supply departments.

Healthcare - pharmacy, supplies, maintenance.

Law enforcement - property and evidence, supplies.

# V-Grip™ Shelving

At the heart of Equipto's engineered space solutions is V-Grip, an industrial shelving system design that is unmatched in structural integrity and provides the industry's broadest selection of accessory components to meet virtually any application.

- V-Grip upright posts have an exclusive triangular design that maximizes load-bearing capability while providing a smooth front surface without unsightly holes or hardware.
- Combine V-Grip components to meet specific applications:
- Heavy duty steel shelves
- Wire shelves for better flow of light and air
- Versa rack shelf beams accommodate wood, wire or steel shelves
- Modular drawers in 48 different sizes with a capacity of 200 or 400 lbs.
- Use full or partial height dividers to create custom storage bins
- Bulk rack options including solid or wire shelves with spans up to 8 feet and capacities up to 3400 lbs. per level
- Reflective white back and end panels
- Consult Customer Service if you are in a seismic zone

**Multiple connected V-Grip shelving units are shown below.**



A standard color chart is available at the beginning of each section with a more detailed one on page 126.

# The Versatility of the V-Grip™ Upright Post

One post - 10 shelf options

Wire rack truss is designed with a rigid 3-point connection for maximum rigidity. (see page 13)

Bulk rack beams with reinforced waterfall wire decking for maximum load capacity in a wire deck application. (see pages 21-24)

Bulk rack beams with reinforced drop-in wire decking. (see pages 21-24)

Bulk rack beams with heavy duty 18 gauge corrugated steel deck panels. (see pages 21-24)

Versa rack shelf beams with 24 gauge corrugated steel deck shelf. (see pages 17-19)



Wire shelf with integrated wire truss for maximum rigidity. (see page 06, 10 and 13)

Heavy duty 18 gauge solid steel shelf. (see page 13)

Modular drawers come in 48 standard sizes in 200 lb. and 400 lb. capacity. (see pages 14-15)

Versarack shelf beams with drop-in wire shelf. (see page 18-19)

Versarack shelf beams with 5/8" particleboard shelf. (see page 18-19)

A standard color chart is available at the beginning of each section with a more detailed one on page 126.

**V-Grip™ Shelving features the most efficient fastening principle known:**

Corner shelf reinforcements with extruded studs insert easily into tapered slots in uprights.  
 Shelf corner drops firmly over corner reinforcement and seats itself. Four-way, crossed tension minimizes deflection, and imparts superior strength and rigidity to the unit.



Double-flanged V-Grip uprights allow easy side-by-side assembly of shelving in rows, with the strongest configuration. Each flange of the upright supports a shelf from one adjoining unit only.



Heavy duty V-Grip shelves are constructed of 18-gauge steel, and double-flanged on all four sides for maximum strength and firmness.



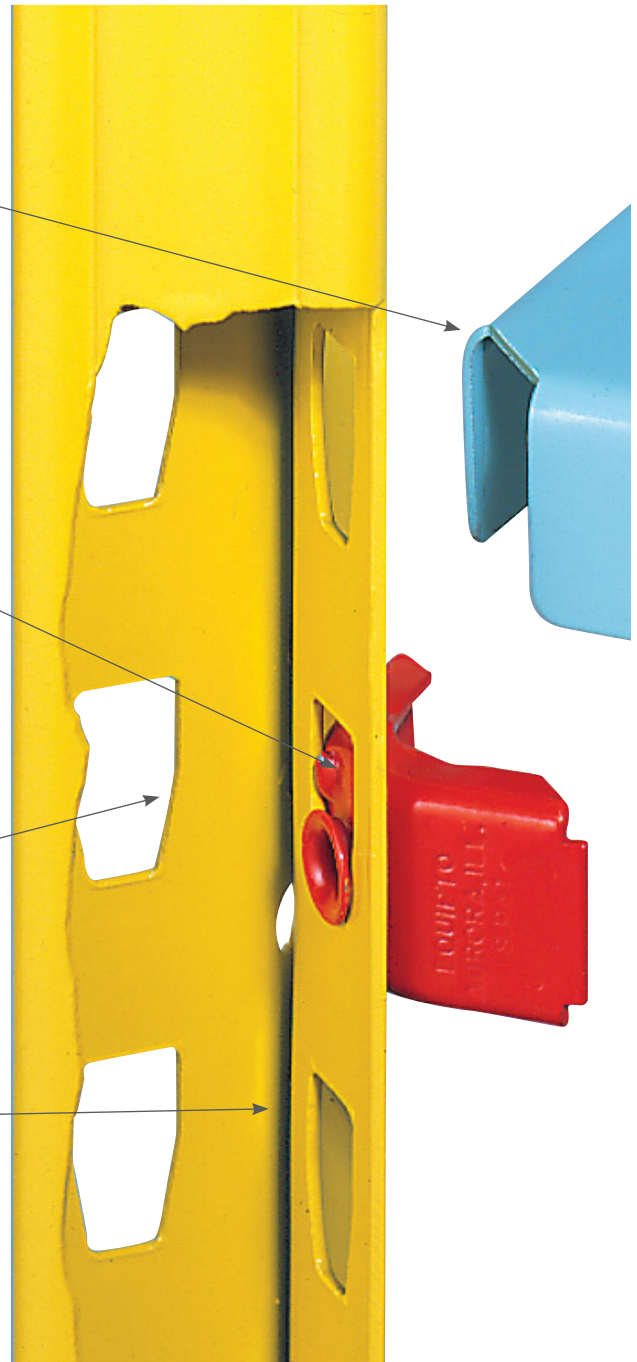
Common upright clamp provides back-to-back reinforcement.\*\*



Optional drawers maximize cubic density in V-Grip shelving.

**Versatile V-Grip uprights**

Permit practical back-to-back assembly of shelving units, with the same, strong reinforcement that actually strengthens shelves and uprights, yet permits their easy adjustment, and features a capacity up to 9000 lbs.



Shelves adjust instantly on 1 1/2" centers, without disturbing shelves in adjoining units.

Corner reinforcement inserts into upright; shelf simply fits down over it, and locks into place.\*

Tapered slots in uprights accept corner reinforcements for 4-way shelf support.

Double-flanged upright avoids two shelves from adjoining units placing stress on a single flange.

\* Shown in color for clarity, actual part is zinc plated.

\*\* Shown in color for clarity, actual part is galvanized steel.

**Shelving & Racks**

**V-Gript™ Solid Shelving - Open - 84”H**

| Depth            | Width | Shelf Capacity | 5 Shelves |        | 7 Shelves |        | Extra Shelf |
|------------------|-------|----------------|-----------|--------|-----------|--------|-------------|
|                  |       |                | Starter   | Add-On | Starter   | Add-On |             |
| <b>12” Depth</b> |       |                |           |        |           |        |             |
| 12”              | 36”   | 650 lbs.       | 661-5S    | 661-5A | 661-7S    | 661-7A | 6230        |
| 12”              | 36”   | 940 lbs.       | 761-5S    | 761-5A | 761-7S    | 761-7A | 6230R       |
| 12”              | 42”   | 500 lbs.       | 661Y5S    | 661Y5A | 661Y7S    | 661Y7A | 6250        |
| 12”              | 42”   | 900 lbs.       | 761Y5S    | 761Y5A | 761Y7S    | 761Y7A | 6250R       |
| 12”              | 48”   | 430 lbs.       | 661W5S    | 661W5A | 661W7S    | 661W7A | 6240        |
| 12”              | 48”   | 700 lbs.       | 761W5S    | 761W5A | 761W7S    | 761W7A | 6240R       |
| <b>18” Depth</b> |       |                |           |        |           |        |             |
| 18”              | 36”   | 700 lbs.       | 663-5S    | 663-5A | 663-7S    | 663-7A | 6231        |
| 18”              | 36”   | 1,170 lbs.     | 763-5S    | 763-5A | 763-7S    | 763-7A | 6231R       |
| 18”              | 42”   | 500 lbs.       | 663Y5S    | 663Y5A | 663Y7S    | 663Y7A | 6251        |
| 18”              | 42”   | 900 lbs.       | 763Y5S    | 763Y5A | 763Y7S    | 763Y7A | 6251R       |
| 18”              | 48”   | 440 lbs.       | 663W5S    | 663W5A | 663W7S    | 663W7A | 6241        |
| 18”              | 48”   | 740 lbs.       | 763W5S    | 763W5A | 763W7S    | 763W7A | 6241R       |
| <b>24” Depth</b> |       |                |           |        |           |        |             |
| 24”              | 36”   | 721 lbs.       | 665-5S    | 665-5A | 665-7S    | 665-7A | 6232        |
| 24”              | 36”   | 1,000 lbs.     | 765-5S    | 765-5A | 765-7S    | 765-7A | 6232R       |
| 24”              | 42”   | 500 lbs.       | 665Y5S    | 665Y5A | 665Y7S    | 665Y7A | 6252        |
| 24”              | 42”   | 900 lbs.       | 765Y5S    | 765Y5A | 765Y7S    | 765Y7A | 6252R       |
| 24”              | 48”   | 450 lbs.       | 665W5S    | 665W5A | 665W7S    | 665W7A | 6242        |
| 24”              | 48”   | 720 lbs.       | 765W5S    | 765W5A | 765W7S    | 765W7A | 6242R       |
| <b>36” Depth</b> |       |                |           |        |           |        |             |
| 36”              | 36”   | 670 lbs.       | 667-5S    | 667-5A | 667-7S    | 667-7A | 6234        |
| 36”              | 36”   | 790 lbs.       | 767-5S    | 767-5A | 767-7S    | 767-7A | 6234R       |



Reflective white back and end panels are standard, regardless of shelf color  
 Add 1<sup>5/8</sup>” to nominal shelving row width to determine total row width.

**V-Gript™ Solid Shelving - Closed - 84”H**



| Depth            | Width | Shelf Capacity | 5 Shelves |        | 7 Shelves |        | Extra Shelf |
|------------------|-------|----------------|-----------|--------|-----------|--------|-------------|
|                  |       |                | Starter   | Add-On | Starter   | Add-On |             |
| <b>12” Depth</b> |       |                |           |        |           |        |             |
| 12”              | 36”   | 650 lbs.       | 671-5S    | 671-5A | 671-7S    | 671-7A | 6230        |
| 12               | 36”   | 940 lbs.       | 771-5S    | 771-5A | 771-7S    | 771-7A | 6230R       |
| 12               | 42”   | 500 lbs.       | 671Y5S    | 671Y5A | 671Y7S    | 671Y7A | 6250        |
| 12               | 42”   | 900 lbs.       | 771Y5S    | 771Y5A | 771Y7S    | 771Y7A | 6250R       |
| 12               | 48”   | 430 lbs.       | 671W5S    | 671W5A | 671W7S    | 671W7A | 6240        |
| 12               | 48”   | 700 lbs.       | 771W5S    | 771W5A | 771W7S    | 771W7A | 6240R       |
| <b>18” Depth</b> |       |                |           |        |           |        |             |
| 18”              | 36”   | 700 lbs.       | 673-5S    | 673-5A | 673-7S    | 673-7A | 6231        |
| 18               | 36”   | 1,170 lbs.     | 773-5S    | 773-5A | 773-7S    | 773-7A | 6231R       |
| 18               | 42”   | 500 lbs.       | 673Y5S    | 673Y5A | 673Y7S    | 673Y7A | 6251        |
| 18               | 42”   | 900 lbs.       | 773Y5S    | 773Y5A | 773Y7S    | 773Y7A | 6251R       |
| 18               | 48”   | 440 lbs.       | 673W5S    | 673W5A | 673W7S    | 673W7A | 6241        |
| 18               | 48”   | 740 lbs.       | 773W5S    | 773W5A | 773W7S    | 773W7A | 6241R       |
| <b>24” Depth</b> |       |                |           |        |           |        |             |
| 24”              | 36”   | 721 lbs.       | 675-5S    | 675-5A | 675-7S    | 675-7A | 6232        |
| 24               | 36”   | 1,000 lbs.     | 775-5S    | 775-5A | 775-7S    | 775-7A | 6232R       |
| 24               | 42”   | 500 lbs.       | 675Y5S    | 675Y5A | 675Y7S    | 675Y7A | 6252        |
| 24               | 42”   | 900 lbs.       | 775Y5S    | 775Y5A | 775Y7S    | 775Y7A | 6232R       |
| 24               | 48”   | 450 lbs.       | 675W5S    | 675W5A | 675W7S    | 675W7A | 6242        |
| 24               | 48”   | 720 lbs.       | 775W5S    | 775W5A | 775W7S    | 775W7A | 6242R       |
| <b>36” Depth</b> |       |                |           |        |           |        |             |
| 36”              | 36”   | 690 lbs.       | 677-5S    | 677-5A | 677-7S    | 677-7A | 6234        |
| 36               | 36”   | 790 lbs.       | 777-5S    | 777-5A | 777-7S    | 777-7A | 6234R       |

Reflective white back and end panels are standard, regardless of shelf color  
 Add 1<sup>5/8</sup>” to nominal shelving row width to determine total row width.

A standard color chart is available at the beginning of each section with a more detailed one on page 126.

**V-Grip™ Wire Shelving - 700 lb. capacity per shelf**

| Depth            | Width | 36"H with 2 shelves |          | 48"H with 3 shelves |          | 60"H with 4 shelves |          | 72"H with 5 shelves |          | 84"H with 6 shelves |          | 96"H with 7 shelves |          | 120"H with 9 shelves |          |
|------------------|-------|---------------------|----------|---------------------|----------|---------------------|----------|---------------------|----------|---------------------|----------|---------------------|----------|----------------------|----------|
|                  |       | Starter             | Add-On   | Starter             | Add-On   | Starter             | Add-On   | Starter             | Add-On   | Starter             | Add-On   | Starter             | Add-On   | Starter              | Add-On   |
| <b>12" Depth</b> |       |                     |          |                     |          |                     |          |                     |          |                     |          |                     |          |                      |          |
| 12"              | 24"   | 4723-02S            | 4723-02A | 4724-03S            | 4724-03A | 4725-04S            | 4725-04A | 4726-05S            | 4726-05A | 4727-06S            | 4727-06A | 4728-07S            | 4728-07A | 4729-08S             | 4729-08A |
| 12"              | 36"   | 4733-02S            | 4733-02A | 4734-03S            | 4734-03A | 4735-04S            | 4735-04A | 4736-05S            | 4736-05A | 4737-06S            | 4737-06A | 4738-07S            | 4738-07A | 4739-08S             | 4739-08A |
| 12"              | 48"   | 4743-02S            | 4743-02A | 4744-03S            | 4744-03A | 4745-04S            | 4745-04A | 4746-05S            | 4746-05A | 4747-06S            | 4747-06A | 4748-07S            | 4748-07A | 4749-08S             | 4749-08A |
| 12"              | 60"   | 4753-02S            | 4753-02A | 4754-03S            | 4754-03A | 4755-04S            | 4755-04A | 4756-05S            | 4756-05A | 4757-06S            | 4757-06A | 4758-07S            | 4758-07A | 4759-08S             | 4759-08A |
| 12"              | 72"   | 4763-02S            | 4763-02A | 4764-03S            | 4764-03A | 4765-04S            | 4765-04A | 4766-05S            | 4766-05A | 4767-06S            | 4767-06A | 4768-07S            | 4768-07A | 4769-08S             | 4769-08A |
| <b>18" Depth</b> |       |                     |          |                     |          |                     |          |                     |          |                     |          |                     |          |                      |          |
| 18"              | 24"   | 4523-02S            | 4523-02A | 4524-03S            | 4524-03A | 4525-04S            | 4525-04A | 4526-05S            | 4526-05A | 4527-06S            | 4527-06A | 4528-07S            | 4528-07A | 4529-08S             | 4529-08A |
| 18"              | 36"   | 4533-02S            | 4533-02A | 4534-03S            | 4534-03A | 4535-04S            | 4535-04A | 4536-05S            | 4536-05A | 4537-06S            | 4537-06A | 4538-07S            | 4538-07A | 4539-08S             | 4539-08A |
| 18"              | 48"   | 4543-02S            | 4543-02A | 4544-03S            | 4544-03A | 4545-04S            | 4545-04A | 4546-05S            | 4546-05A | 4547-06S            | 4547-06A | 4548-07S            | 4548-07A | 4549-08S             | 4549-08A |
| 18"              | 60"   | 4553-02S            | 4553-02A | 4554-03S            | 4554-03A | 4555-04S            | 4555-04A | 4556-05S            | 4556-05A | 4557-06S            | 4557-06A | 4558-07S            | 4558-07A | 4559-08S             | 4559-08A |
| 18"              | 72"   | 4563-02S            | 4563-02A | 4564-03S            | 4564-03A | 4565-04S            | 4565-04A | 4566-05S            | 4566-05A | 4567-06S            | 4567-06A | 4568-07S            | 4568-07A | 4569-08S             | 4569-08A |
| <b>24" Depth</b> |       |                     |          |                     |          |                     |          |                     |          |                     |          |                     |          |                      |          |
| 24"              | 24"   | 4623-02S            | 4623-02A | 4624-03S            | 4624-03A | 4625-04S            | 4625-04A | 4626-05S            | 4626-05A | 4627-06S            | 4627-06A | 4628-07S            | 4628-07A | 4629-08S             | 4629-08A |
| 24"              | 36"   | 4633-02S            | 4633-02A | 4634-03S            | 4634-03A | 4635-04S            | 4635-04A | 4636-05S            | 4636-05A | 4637-06S            | 4637-06A | 4638-07S            | 4638-07A | 4639-08S             | 4639-08A |
| 24"              | 48"   | 4643-02S            | 4643-02A | 4644-03S            | 4644-03A | 4645-04S            | 4645-04A | 4646-05S            | 4646-05A | 4647-06S            | 4647-06A | 4648-07S            | 4648-07A | 4649-08S             | 4649-08A |
| 24"              | 60"   | 4653-02S            | 4653-02A | 4654-03S            | 4654-03A | 4655-04S            | 4655-04A | 4656-05S            | 4656-05A | 4657-06S            | 4657-06A | 4658-07S            | 4658-07A | 4659-08S             | 4659-08A |
| 24"              | 72"   | 4663-02S            | 4663-02A | 4664-03S            | 4664-03A | 4665-04S            | 4665-04A | 4666-05S            | 4666-05A | 4667-06S            | 4667-06A | 4668-07S            | 4668-07A | 4669-08S             | 4669-08A |

**Extra wire shelves**

| Depth | 2' wide | 3' wide | 4' wide | 5' wide | 6' wide |
|-------|---------|---------|---------|---------|---------|
| 12"   | 6062    | 6063    | 6064    | 6065    | 6066    |
| 18"   | 6072    | 6073    | 6074    | 6075    | 6076    |
| 24"   | 6082    | 6083    | 6084    | 6085    | 6086    |



Standard Color - Mirror silver. For other colors refer to Equipto color chart on page 126 or at the beginning of each section. \*Not shown to scale.

# V-Grip™ Shelving with Drawers

Combining modular drawers with V-Grip™ shelving optimizes flexibility by providing an ergonomic approach to storing a mix of small and bulk items. Placement of drawers between the knees and shoulders reduces the reaching and bending required of conventional storage cabinets, while providing space for bulk storage above and below drawers.

- 48 different drawer sizes
- 36" and 48" widths
- 18" and 24" depths
- Drawer heights from 3" to 13<sup>1</sup>/<sub>2</sub>"
- 200 and 400lb. drawer capacity
- Each drawer has individual rigid mounting brackets for 100% flexibility of drawer location
- Drawers available with or without divider sets
- Drawers include handles with integral plastic-covered label holder



Order drawer dividers to easily organize parts.

## GOLD ZONE

The same versatile V-Grip™ design that gives you the flexibility to add wire shelving and lockable cabinets can also be configured so that all your modular drawers are between your shoulders and knees, or "GOLD ZONE". Consequently, there's no squatting, stretching or straining to store and retrieve parts and tools.



Easily organize drawer contents.



A standard color chart is available at the beginning of each section with a more detailed one on page 126.

**84”H Closed preconfigured units with drawers:**

Shown with optional wire shelf top.



**Drawers included: (1)-3”H, (1)-4 1/2”H, (1)-6”H & (1)-7 1/2”H**

| Drawer Depth | Drawer Width | Capacity Per Drawer | Starter Part No. | Add-On Part No. |
|--------------|--------------|---------------------|------------------|-----------------|
| 18”          | 36”          | 200 lbs.            | 4220VNS          | 4220VNA         |
|              | 36”          | 400 lbs.            | 4220VHS          | 4220VHA         |
|              | 48”          | 400 lbs.            | 4240VHS          | 4240VHA         |
| 24”          | 36”          | 200 lbs.            | 4230VNS          | 4230VNA         |
|              | 36”          | 400 lbs.            | 4230VHS          | 4230VHA         |
|              | 48”          | 400 lbs.            | 4250VHS          | 4250VHA         |

**Drawers included: (2)-4 1/2”H & (2)-6” H**

| Drawer Depth | Drawer Width | Capacity Per Drawer | Starter Part No. | Add-On Part No. |
|--------------|--------------|---------------------|------------------|-----------------|
| 18”          | 36”          | 200 lbs.            | 4221VNS          | 4221VNA         |
|              | 36”          | 400 lbs.            | 4221VHS          | 4221VHA         |
|              | 48”          | 400 lbs.            | 4241VHS          | 4241VHA         |
| 24”          | 36”          | 200 lbs.            | 4231VNS          | 4231VNA         |
|              | 36”          | 400 lbs.            | 4231VHS          | 4231VHA         |
|              | 48”          | 400 lbs.            | 4251VHS          | 4251VHA         |



**Drawers included: (2)-3”H, (1)-4 1/2”H & (1)-7 1/2”H**

| Drawer Depth | Drawer Width | Capacity Per Drawer | Starter Part No. | Add-On Part No. |
|--------------|--------------|---------------------|------------------|-----------------|
| 18”          | 36”          | 200 lbs.            | 4222VNS          | 4222VNA         |
|              | 36”          | 400 lbs.            | 4222VHS          | 4222VHA         |
|              | 48”          | 400 lbs.            | 4242VHS          | 4242VHA         |
| 24”          | 36”          | 200 lbs.            | 4232VNS          | 4232VNA         |
|              | 36”          | 400 lbs.            | 4232VHS          | 4232VHA         |
|              | 48”          | 400 lbs.            | 4252VHS          | 4252VHA         |

**Drawers included: (4)-4 1/2”H**

| Drawer Depth | Drawer Width | Capacity Per Drawer | Starter Part No. | Add-On Part No. |
|--------------|--------------|---------------------|------------------|-----------------|
| 18”          | 36”          | 200lb               | 4223VNS          | 4223VNA         |
|              | 36”          | 400lb               | 4223VHS          | 4223VHA         |
|              | 48”          | 400lb               | 4243VHS          | 4243VHA         |
| 24”          | 36”          | 200lb               | 4233VNS          | 4233VNA         |
|              | 36”          | 400lb               | 4233VHS          | 4233VHA         |
|              | 48”          | 400lb               | 4253VHS          | 4253VHA         |

\*All units come with 5 solid shelves. Optional wire shelf is shown in unit pictures.

For additional shelves please see page 13. No Divider Kits included, refer to page 14 and 15 for Divider Kit options.

A standard color chart is available at the beginning of each section with a more detailed one on page 126.

Shelving & Racks



# V-Grip™ Shelving Bin Units

| 23 Openings                  |         | 21 Openings    |         | 36 Openings  |         | 66 Openings      |         | 78 Openings  |         |        |
|------------------------------|---------|----------------|---------|--------------|---------|------------------|---------|--------------|---------|--------|
| 4-9"W x 9"H, 8-9"W x 12"H    |         | 18-12"W x 12"H |         | 36-9"W x 9"H |         | 60-6"W x 7 1/2"H |         | 72-6"W x 6"H |         |        |
| 9-12"W x 12"H, 2-18"W x 12"H |         | 3-12"W x 9"H   |         |              |         | 6-6"W x 9"H      |         | 6-6"W x 9"H  |         |        |
| Depth                        | Starter | Add-on         | Starter | Add-on       | Starter | Add-on           | Starter | Add-on       | Starter | Add-on |
| 12"                          | 914S    | 914A           | 906S    | 906A         | 905S    | 905A             | 904S    | 904A         | 903S    | 903A   |
| 18"                          | 914DS   | 914DA          | 906DS   | 906DA        | 905DS   | 905DA            | 904DS   | 904DA        | 903DS   | 903DA  |
| 24"                          | 914ES   | 914EA          | 906ES   | 906EA        | 905ES   | 905EA            | 904ES   | 904EA        | 903ES   | 903EA  |

All Units are 36" Wide and 84" in Height, for other available heights and widths contact Equipto.  
Clear height of bin opening is 1 1/2" less than nominal height shown.



- Simple clip and divider system creates efficient bin compartments.
- Match right size opening to your parts and supplies
- Add doors for cleanliness and security
- Use bin units back-to-back, form dividing walls, use near desks, machines or benches



| 36 openings |  | 79 openings                   |  | 92 openings    |  | 72 drawers             |  | 108 drawers        |  |
|-------------|--|-------------------------------|--|----------------|--|------------------------|--|--------------------|--|
| 9"W x 9"H   |  | Assorted Sizes                |  | Assorted Sizes |  | Drawers: 5 5/8"W x 3"H |  | 5 5/8"W x 3"H      |  |
|             |  | 12 Drawers                    |  | 24 Drawers     |  | 6 Bins: 18"W           |  | (324 Compartments) |  |
|             |  | 3 Compartments in each drawer |  | 5 5/8"W x 3"H  |  |                        |  |                    |  |

|       |         |        |         |        |         |        |         |        |         |        |
|-------|---------|--------|---------|--------|---------|--------|---------|--------|---------|--------|
| Depth | Starter | Add-on | Starter | Add-on | Starter | Add-on | Starter | Add-on | Starter | Add-on |
| 12"   | 907S    | 907A   | 910S    | 910A   | 911S    | 911A   | 920S    | 920A   | 919S    | 919A   |
| 18"   | 907DS   | 907DA  | 910DS   | 910DA  | 911DS   | 911DA  | 920DS   | 920DA  | 919DS   | 919DA  |
| 24"   | 907ES   | 907EA  | -       | -      | -       | -      | -       | -      | -       | -      |

All Units are 36" Wide and 84" in Height, for other available heights and widths contact Equipto.  
Clear height of bin opening is 1 1/2" less than nominal height shown.

A standard color chart is available at the beginning of each section with a more detailed one on page 126.

## V-Grip™ X-Ray Shelving

84" high x 36" wide x 18" deep

| Starter | Add-on | Extra divider |
|---------|--------|---------------|
| 908D    | 908DA  | 8091          |

- Unit design provides smooth surfaces to eliminate torn or snagged file folders
- Unit includes 15 dividers
- V-Grip™ design allows easy addition of add-on sections



Shelving & Racks

# V-Grip™ Wire Shelving



Economy bulk wire rack shown

## Three Tier Bulk Rack with Wire Decking

Capacity per tier. 1100 lbs.

| 48" Wide Shelving |        |                  |                 |                  | Additional Shelf |          |
|-------------------|--------|------------------|-----------------|------------------|------------------|----------|
| Depth             | Height | Starter Part No. | Add-on Part No. | Decking Part No. | Beam             | *order 2 |
| 24"               | 60"    | EW1005W42S       | EW1005W42A      | 6100             | 9434             |          |
| 24"               | 72"    | EW1006W42S       | EW1006W42A      | 6100             | 9434             |          |
| 24"               | 84"    | EW1007W42S       | EW1007W42A      | 6100             | 9434             |          |
| 36"               | 60"    | EW1005W43S       | EW1005W43A      | 6101             | 9434             |          |
| 36"               | 72"    | EW1006W43S       | EW1006W43A      | 6101             | 9434             |          |
| 36"               | 84"    | EW1007W43S       | EW1007W43A      | 6101             | 9434             |          |
| 48"               | 60"    | EW1005W44S       | EW1005W44A      | 6109             | 9434             |          |
| 48"               | 72"    | EW1006W44S       | EW1006W44A      | 6109             | 9434             |          |
| 48"               | 84"    | EW1007W44S       | EW1007W44A      | 6109             | 9434             |          |

| 60" Wide Shelving |        |                  |                 |                  | Additional Shelf |          |
|-------------------|--------|------------------|-----------------|------------------|------------------|----------|
| Depth             | Height | Starter Part No. | Add-on Part No. | Decking Part No. | Beam             | *order 2 |
| 36"               | 60"    | EW1005W53S       | EW1005W53A      | 6102             | 9435             |          |
| 36"               | 72"    | EW1006W53S       | EW1006W53A      | 6102             | 9435             |          |
| 36"               | 84"    | EW1007W53S       | EW1007W53A      | 6102             | 9435             |          |
| 48"               | 60"    | EW1005W54S       | EW1005W54A      | 6110             | 9435             |          |
| 48"               | 72"    | EW1006W54S       | EW1006W54A      | 6110             | 9435             |          |
| 48"               | 84"    | EW1007W54S       | EW1007W54A      | 6110             | 9435             |          |

| 96" Wide Shelving |        |                  |                 |                  | Additional Shelf |          |
|-------------------|--------|------------------|-----------------|------------------|------------------|----------|
| Depth             | Height | Starter Part No. | Add-on Part No. | Decking Part No. | Beam             | *order 2 |
| 24"               | 60"    | EW1015W82S       | EW1015W82A      | 6100             | 9448             |          |
| 24"               | 72"    | EW1016W82S       | EW1016W82A      | 6100             | 9448             |          |
| 24"               | 84"    | EW1017W82S       | EW1017W82A      | 6100             | 9448             |          |
| 36"               | 60"    | EW1015W83S       | EW1015W83A      | 6101             | 9448             |          |
| 36"               | 72"    | EW1016W83S       | EW1016W83A      | 6101             | 9448             |          |
| 36"               | 84"    | EW1017W83S       | EW1017W83A      | 6101             | 9448             |          |
| 48"               | 60"    | EW1015W84S       | EW1015W84A      | 6109             | 9448             |          |
| 48"               | 72"    | EW1016W84S       | EW1016W84A      | 6109             | 9448             |          |
| 48"               | 84"    | EW1017W84S       | EW1017W84A      | 6109             | 9448             |          |

- High visibility for inventory inspection
- Increase overhead sprinkler effectiveness
- Eliminates dirt build-up
- Improves air circulation
- Expandable construction
- 2 wire trusses

## Three Level V-Grip™ Wire Rack

Capacity per tier. 1000 lbs.

| 48" Wide Shelving |        |                  |                 | Additional Shelf |                |
|-------------------|--------|------------------|-----------------|------------------|----------------|
| Depth             | Height | Starter Part No. | Add-on Part No. | Decking Part No. | Truss *order 2 |
| 24"               | 60"    | EW1524-05S       | EW1524-05A      | 6100             | 9484           |
| 24"               | 72"    | EW1524-06S       | EW1524-06A      | 6100             | 9484           |
| 24"               | 84"    | EW1524-07S       | EW1524-07A      | 6100             | 9484           |
| 36"               | 60"    | EW1534-05S       | EW1534-05A      | 6101             | 9484           |
| 36"               | 72"    | EW1534-06S       | EW1534-06A      | 6101             | 9484           |
| 36"               | 84"    | EW1534-07S       | EW1534-07A      | 6101             | 9484           |
| 48"               | 60"    | EW1544-05S       | EW1544-05A      | 6109             | 9484           |
| 48"               | 72"    | EW1544-06S       | EW1544-06A      | 6109             | 9484           |
| 48"               | 84"    | EW1544-07S       | EW1544-07A      | 6109             | 9484           |

| 96" Wide Shelving |        |                  |                 | Additional Shelf |                |
|-------------------|--------|------------------|-----------------|------------------|----------------|
| Depth             | Height | Starter Part No. | Add-on Part No. | Decking *order 2 | Truss *order 2 |
| 24"               | 60"    | EW1528-05S       | EW1528-05A      | 6100             | 9488           |
| 24"               | 72"    | EW1528-06S       | EW1528-06A      | 6100             | 9488           |
| 24"               | 84"    | EW1524-07S       | EW1528-07A      | 6100             | 9488           |
| 36"               | 60"    | EW1538-05S       | EW1538-05A      | 6101             | 9488           |
| 36"               | 72"    | EW1538-06S       | EW1538-06A      | 6101             | 9488           |
| 36"               | 84"    | EW1538-07S       | EW1538-07A      | 6101             | 9488           |
| 48"               | 60"    | EW1548-05S       | EW1548-05A      | 6109             | 9488           |
| 48"               | 72"    | EW1548-06S       | EW1548-06A      | 6109             | 9488           |
| 48"               | 84"    | EW1548-07S       | EW1548-07A      | 6109             | 9488           |

## Four Level V-Grip™ Wire Rack

Capacity per tier. 1000 lbs.

| 48" Wide Shelving |        |                  |                 | Additional Shelf |                |
|-------------------|--------|------------------|-----------------|------------------|----------------|
| Depth             | Height | Starter Part No. | Add-on Part No. | Decking Part No. | Truss *order 2 |
| 24"               | 96"    | EW1524-08S       | EW1524-08A      | 6100             | 9484           |
| 24"               | 120"   | EW1524-10S       | EW1524-10A      | 6100             | 9484           |
| 36"               | 96"    | EW1534-08S       | EW1534-08A      | 6101             | 9484           |
| 36"               | 120"   | EW1534-10S       | EW1534-10A      | 6101             | 9484           |
| 48"               | 96"    | EW1544-08S       | EW1544-08A      | 6109             | 9484           |
| 48"               | 120"   | EW1544-10S       | EW1544-10A      | 6109             | 9484           |

| 96" Wide Shelving |        |                  |                 | Additional Shelf |                |
|-------------------|--------|------------------|-----------------|------------------|----------------|
| Depth             | Height | Starter Part No. | Add-on Part No. | Decking *order 2 | Truss *order 2 |
| 24"               | 96"    | EW1528-08S       | EW1528-08A      | 6100             | 9488           |
| 24"               | 120"   | EW1528-10S       | EW1528-10A      | 6100             | 9488           |
| 36"               | 96"    | EW1538-08S       | EW1538-08A      | 6101             | 9488           |
| 36"               | 120"   | EW1538-10S       | EW1538-10A      | 6101             | 9488           |
| 48"               | 96"    | EW1548-08S       | EW1548-08A      | 6109             | 9488           |
| 48"               | 120"   | EW1548-10S       | EW1548-10A      | 6109             | 9488           |

## Four Tier Bulk Rack with Wire Decking

Capacity per tier. 1100 lbs.

| 48" Wide Shelving |        |                  |                 | Additional Shelf |               |
|-------------------|--------|------------------|-----------------|------------------|---------------|
| Depth             | Height | Starter Part No. | Add-on Part No. | Decking Part No. | Beam *order 2 |
| 24"               | 96"    | EW1008W42S       | EW1008W42A      | 6100             | 9434          |
| 24"               | 120"   | EW1010W42S       | EW1010W42A      | 6100             | 9434          |
| 36"               | 96"    | EW1008W43S       | EW1008W43A      | 6101             | 9434          |
| 36"               | 120"   | EW1010W43S       | EW1010W43A      | 6101             | 9434          |
| 48"               | 96"    | EW1008W44S       | EW1008W44A      | 6109             | 9434          |
| 48"               | 120"   | EW1010W44S       | EW1010W44A      | 6109             | 9434          |

| 60" Wide Shelving |        |                  |                 | Additional Shelf |               |
|-------------------|--------|------------------|-----------------|------------------|---------------|
| Depth             | Height | Starter Part No. | Add-on Part No. | Decking Part No. | Beam *order 2 |
| 36"               | 96"    | EW1008W53S       | EW1008W53A      | 6102             | 9435          |
| 36"               | 120"   | EW1010W53S       | EW1010W53A      | 6102             | 9435          |
| 48"               | 96"    | EW1008W54S       | EW1008W54A      | 6110             | 9435          |
| 48"               | 120"   | EW1010W54S       | EW1010W54A      | 6110             | 9435          |

| 96" Wide Shelving |        |                  |                 | Additional Shelf |               |
|-------------------|--------|------------------|-----------------|------------------|---------------|
| Depth             | Height | Starter Part No. | Add-on Part No. | Decking *order 2 | Beam *order 2 |
| 24"               | 96"    | EW1018W82S       | EW1018W82A      | 6100             | 9448          |
| 24"               | 120"   | EW1020W82S       | EW1020W82A      | 6100             | 9448          |
| 36"               | 96"    | EW1018W83S       | EW1018W83A      | 6101             | 9448          |
| 36"               | 120"   | EW1020W83S       | EW1020W83A      | 6101             | 9448          |
| 48"               | 96"    | EW1018W84S       | EW1018W84A      | 6109             | 9448          |
| 48"               | 120"   | EW1020W84S       | EW1020W84A      | 6109             | 9448          |

A standard color chart is available at the beginning of each section with a more detailed one on page 126.



# V-Grip™ Shelving Components

Designed and engineered for maximum interchangeability, V-Grip™ components carry the quality assurance that has made Equipto the leader in industrial shelving systems. All parts and accessories are designed and produced by Equipto to integrate and form a solid compression fit resulting in a storage system that is guaranteed to deliver years of reliable service.



## V-Grip™ shelving components

Structural Integrity comes from the integration of Equipto's exclusive V-Grip™ upright post and heavy-duty, compression-fit components.

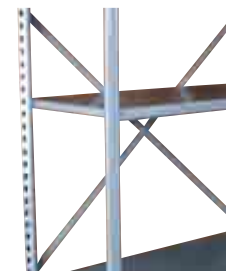
**When ordering V-Grip shelving by component, remember:**

- 1) To include 1 shelving end for each section of shelving and 1 shelving end to terminate each row.
- 2) Back sway braces and solid back panels can be shared between back-to-back units.
- 3) Closed shelving ends and solid back panels are finished in standard reflective white paint to enhance visibility in parts storage areas.
- 4) V-Grip™ shelves are heavy duty, 18-gauge steel and are provided with 4 corner clip reinforcements per shelf, which provide a friction fit to V-Grip™ upright posts.
- 5) To link back to back shelves use 10381 clamps.
- 6) Consult Customer Service if you are in a seismic zone.

### Upright posts (15/8" Wide)

| Description | Part No. |
|-------------|----------|
| 36" High    | 5003     |
| 42" High    | 5035     |
| 48" High    | 5004     |
| 54" High    | 5031     |
| 60" High    | 5005     |
| 72" High    | 5006     |
| 78" High    | 5022     |
| 84" High    | 5007     |
| 90" High    | 5023     |
| 96" High    | 5008     |
| 108" High   | 5009     |
| 120" High   | 5010     |
| 144" High   | 5012     |
| 180" High*  | 5015     |

\*Posts over 144"H are spliced



### Back sway braces

| Description    | Part No. |
|----------------|----------|
| 24" Back, pair | 6418     |
| 36" Back, pair | 6416     |
| 42" Back, pair | 6419     |
| 48" Back, pair | 6417     |

1 Req. up to 8 ft. / 2 Req. 9-15 ft.

**Back and end panels are available in other colors.**

### Open shelving ends (D X H)

| Description       | Part No. |
|-------------------|----------|
| 12" x 84" Open    | 6702     |
| 18" x 84" Open    | 6712     |
| 24" x 84" Open    | 6722     |
| 36" x 84" Open    | 6732     |
| 12" x 96" Open    | 6703     |
| 18" x 96" Open    | 6713     |
| 24" x 96" Open    | 6723     |
| 36" x 96" Open    | 6733     |
| 12" x 120" Open   | 6705     |
| 18" x 120" Open   | 6715     |
| 24" x 120" Open   | 6725     |
| 36" x 120" Open   | 6735     |
| 12" x 144" Open   | 6741     |
| 18" x 144" Open   | 6747     |
| 24" x 144" Open   | 6753     |
| 36" x 144" Open   | 6759     |
| 12" x 180" Open   | 6743     |
| 18" x 180" Open   | 6749     |
| 24" x 180" Open   | 6755     |
| 36" x 180" Open   | 6761     |
| 12" x 180" Closed | 6746     |

84" and 96" high Open Shelving Ends come with 2 upright posts and 2 end brace plates.

### Closed shelving ends (D X H)

| Description       | Part No. |
|-------------------|----------|
| 12" x 84" Closed  | 6707     |
| 18" x 84" Closed  | 6717     |
| 24" x 84" Closed  | 6727     |
| 36" x 84" Closed  | 6737     |
| 12" x 96" Closed  | 6708     |
| 18" x 96" Closed  | 6718     |
| 24" x 96" Closed  | 6728     |
| 36" x 96" Closed  | 6738     |
| 12" x 120" Closed | 6710     |
| 18" x 120" Closed | 6720     |
| 24" x 120" Closed | 6730     |
| 36" x 120" Closed | 6740     |
| 12" x 144" Closed | 6744     |
| 18" x 144" Closed | 6750     |
| 24" x 144" Closed | 6756     |
| 36" x 144" Closed | 6762     |
| 12" x 180" Closed | 6746     |
| 18" x 180" Closed | 6752     |
| 24" x 180" Closed | 6758     |
| 36" x 180" Closed | 6764     |

84" high Closed Shelving Ends come with 2 upright posts and 2 end panels. 96" high Closed Shelving Ends come with 2 upright posts and 3 end panels.

- Standard reflective white



### Solid back panels (W X H)

Standard reflective white

| Description                     | Part No. |
|---------------------------------|----------|
| 24" x 42 <sup>3/4</sup> " High  | 7590     |
| 24" x 43" - 84"                 | 7590-2   |
| 24" x 85" - 126"                | 7590-3   |
| 24" x 127" - 168"               | 7590-4   |
| 24" x 169" - 210"               | 7590-5   |
| 36" x 35 <sup>1/4</sup> " High  | 7588-36  |
| 36" x 42" High                  | 7588     |
| 36" x 41 <sup>1/4</sup> " High* | 810436-5 |
| 36" x 84" High or less          | 7588-2   |
| 36" x over 84" (to 120")        | 7588-3   |
| 36" x 126" to 168"              | 7588-4   |
| 36" x 168" to 210"              | 7588-5   |
| 42" x 42" High                  | 7585     |
| 48" x 35 <sup>1/4</sup> " High  | 7589-36  |
| 48" x 42" High                  | 7589     |
| 48" x 41 <sup>1/4</sup> " High* | 810448-7 |
| 48" x 84" High or less          | 7589-2   |
| 48" x over 84" (to 120")        | 7589-3   |
| 48" x 126" to 168"              | 7589-4   |
| 48" x 168" to 210"              | 7589-5   |

\*For use with 42" uprights

Shelving & Racks

**V-Grip™ shelving components**

Equipto's exclusive Wire Shelf design combines wire truss supports with a heavy-duty waterfall shelf to provide:

- Increased visibility of items on upper shelves
- Better flow of air, light, & sprinklers
- Capacity equal to heavy-duty 18 gauge solid steel shelves
- Shelves are 1 1/4" thick



When using wire shelves in a closed-back shelving configuration, an additional back panel spacer and longer bolt is required to maintain clearance between the panel and the wire shelf.

Plastic spacer PN: 13219S  
Truss head bolt, 10-24 x 1 3/4" PN: 13135  
(one of each per back panel bracket)

**Wire shelves-truss included**  
(D X W) Standard color - Mirror Silver

| Description | Part No. |
|-------------|----------|
| 12" x 24"   | 6062     |
| 12" x 36"   | 6063     |
| 12" x 48"   | 6064     |
| 12" x 60"   | 6065     |
| 12" x 72"   | 6066     |
| 18" x 24"   | 6072     |
| 18" x 36"   | 6073     |
| 18" x 48"   | 6074     |
| 18" x 60"   | 6075     |
| 18" x 72"   | 6076     |
| 24" x 24"   | 6082     |
| 24" x 36"   | 6083     |
| 24" x 48"   | 6084     |
| 24" x 60"   | 6085     |
| 24" x 72"   | 6086     |

**Wire back grids (W x H)**

| Description | Part No. |
|-------------|----------|
| 36" x 36"   | 7556     |
| 48" x 36"   | 7557     |
| 60" x 36"   | 7558     |
| 72" x 36"   | 7559     |
| 96" x 36"   | 7560     |
| 36" x 48"   | 7561     |
| 48" x 48"   | 7562     |
| 60" x 48"   | 7563     |
| 72" x 48"   | 7564     |
| 96" x 48"   | 7566     |



Wire grids are reflective white

**Wire end grids (H x D)**

| Description | Part No. |
|-------------|----------|
| 36" x 12"   | 6780-03  |
| 36" x 18"   | 6781-03  |
| 36" x 24"   | 6782-03  |
| 36" x 36"   | 6783-03  |
| 36" x 48"   | 6784-03  |
| 48" x 12"   | 6795-04  |
| 48" x 18"   | 6791-04  |
| 48" x 24"   | 6792-04  |
| 48" x 36"   | 6793-04  |
| 48" x 48"   | 6794-04  |



Wire grids are reflective white

**Heavy duty 18 ga solid shelves (D x W) 1 1/4" high**

| Description | Part No. | (4) Shelf clips included |
|-------------|----------|--------------------------|
| 12" x 24"   | 6202     |                          |
| 12" x 36"   | 6230     |                          |
| 12" x 42"   | 6250     |                          |
| 12" x 48"   | 6240     |                          |
| 15" x 36"   | 6229     |                          |
| 15" x 48"   | 6239     |                          |
| 18" x 24"   | 6203     |                          |
| 18" x 36"   | 6231     |                          |
| 18" x 42"   | 6251     |                          |
| 18" x 48"   | 6241     |                          |
| 24" x 24"   | 6204     |                          |
| 24" x 36"   | 6232     |                          |
| 24" x 42"   | 6252     |                          |
| 24" x 48"   | 6242     |                          |
| 36" x 36"   | 6234     |                          |
| 36" x 48"   | 6244     |                          |



**End brace plates**

| Description   | Part No. |
|---------------|----------|
| 12" End, pair | 6412     |
| 15" End, pair | 6411     |
| 18" End, pair | 6413     |
| 24" End, pair | 6414     |
| 30" End, pair | 6406     |
| 36" End, pair | 6415     |
| 48" End, pair | 6410     |

For shelving up to 9' high, 2 pairs of plates are required.  
For shelving 9' to 12' high, a total of 3 pairs are required. For 13' high and above, 4 pairs are required.

**Finishing end panels**

| Description (D x H) | Part No. |
|---------------------|----------|
| 12" x 84"           | 7917-12  |
| 15" x 84"           | 7917-15  |
| 18" x 84"           | 7917-18  |
| 24" x 84"           | 7917-24  |
| 30" x 84"           | 7917-30  |

Flush fit to V-Grip.  
Row end covers all holes.  
Does not eliminate requirement for sway brace.  
Finishes off the end of a unit with an attractive solid panel.  
Standard color is reflective white regardless of shelf color



**Reinforced heavy duty solid shelves**

|           |       |
|-----------|-------|
| 12" x 36" | 6230R |
| 12" x 48" | 6240R |
| 18" x 36" | 6231R |
| 18" x 48" | 6241R |
| 24" x 36" | 6232R |
| 24" x 48" | 6242R |
| 36" x 36" | 6234R |

Includes front and rear reinforcing bars.  
Recommended for bottom 2 shelves on units over 8'.

**Center reinforcements 16 ga**

|             |       |
|-------------|-------|
| 36" Channel | 10051 |
| 48" Channel | 10052 |

**Reinforcements R - 13 ga**

|                   |       |
|-------------------|-------|
| 36" Front/RearEnd | 10093 |
| 42" Front or Rear | 9952  |
| 48" Front or Rear | 10094 |
| 12" End           | 9630  |
| 18" End           | 9631  |
| 24" End           | 9632  |

**Wire deck shelf panel**

|           |      |
|-----------|------|
| 12" x 24" | 6002 |
| 12" x 36" | 6003 |
| 18" x 24" | 6012 |
| 18" x 36" | 6013 |
| 24" x 24" | 6042 |
| 24" x 36" | 6043 |

**Wire shelf truss**

|     |      |
|-----|------|
| 24" | 9472 |
| 36" | 9473 |
| 48" | 9474 |
| 60" | 9475 |
| 72" | 9476 |

**Solid end panels (D x H)**

| Description              | Part No. |
|--------------------------|----------|
| 12" x 42 3/4"            | 6796     |
| 12" x 84" or less        | 6796-2   |
| 12" x over 84" (to 120") | 6796-3   |
| 12" x 126" to 168"       | 6796-4   |
| 12" x 168" to 210"       | 6796-5   |
| 15" x 42 3/4"            | 810515   |
| 18" x 41 1/4"*           | 810518-4 |
| 18" x 42 3/4"            | 6797     |
| 18" x 84" or less        | 6797-2   |
| 18" x over 84" (to 120") | 6797-3   |
| 18" x 126" to 168"       | 6797-4   |
| 18" x 168" to 210"       | 6797-5   |
| 24" x 33 3/4"            | 6799     |
| 24" x 36"                | 6799-36  |
| 24" x 41 1/4"*           | 810524-5 |
| 24" x 42 3/4"            | 6798     |
| 24" x 84" or less        | 6798-2   |
| 24" x over 84" (to 120") | 6798-3   |
| 24" x 126" to 168"       | 6798-4   |
| 24" x 168" to 210"       | 6798-5   |
| 30" x 42 3/4"            | 810530   |
| 36" x 42 3/4"            | 6800     |
| 36" x 84" or less        | 6800-2   |
| 36" x over 84" (to 120") | 6800-3   |
| 36" x 126" to 168"       | 6800-4   |
| 36" x 168" to 210"       | 6800-5   |

**\*For use with 42" upright**  
**Does not include upright posts.**  
Standard color is reflective white regardless of shelf color



**Pull out reference shelves (D x W)**

| Description | Part No. |
|-------------|----------|
| 12" x 36"   | 6230RFS  |
| 12" x 48"   | 6240RFS  |
| 24" x 36"   | 6232RFS  |
| 24" x 48"   | 6242RFS  |

**400lb. V-Grip Roll-out Shelves**

| Description | Part No. |
|-------------|----------|
| 24" x 36"   | 821131   |
| 24" x 48"   | 821137   |

**Front bases (W x H)**

| Description  | Part No. |
|--------------|----------|
| 25/8" x 36"  | 6803     |
| 4 1/8" x 36" | 6804     |
| 25/8" x 42"  | 010136   |
| 25/8" x 48"  | 6805     |
| 4 1/8" x 42" | 6807     |
| 4 1/8" x 48" | 6806     |

**Bin fronts**

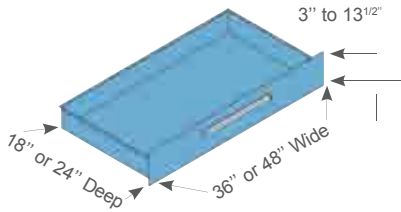
| Description            | Part No. |
|------------------------|----------|
| 1 1/2" x 48" Bin Front | 10515    |
| 1 1/2" x 36" Bin Front | 10514    |
| 1 1/2" x 48" Bin Front | 10515    |
| 3 1/4" x 36" Bin Front | 10516    |
| 3 1/4" x 48" Bin Front | 10517    |

Standard installation of V-Grip shelving drawers leaves a 1/4" space between drawer and the shelf directly above. To close this gap, select the appropriate filler strip:"

For 36"W drawers: 7702 For 48"W drawers: 7702-48

**Modular Drawers**

Maximize density with modular drawers for V-Grip



- 100% drawer extension
- 36 and 48 inch widths; 18 and 24 inch depths
- 200 and 400 lb. capacity



Modular Drawers in V-Grip Shelving

| Depth (Front to Rear) | Height of Drawer Front | Inside Height | 36" Wide 200 lb. Capacity | 36" Wide 400 lb. Capacity | 48" Wide 400 lb. Capacity |
|-----------------------|------------------------|---------------|---------------------------|---------------------------|---------------------------|
| 18"                   | 3"                     | 2"            | 8603N                     | 8603H                     | 8661H                     |
|                       | 4 1/2"                 | 3 1/2"        | 8604N                     | 8604H                     | 8662H                     |
|                       | 6"                     | 5"            | 8605N                     | 8605H                     | 8663H                     |
|                       | 7 1/2"                 | 6 1/2"        | 8606N                     | 8606H                     | 8664H                     |
|                       | 9"                     | 8"            | 8601N                     | 8601H                     | 8665H                     |
|                       | 10 1/2"                | 9 1/2"        | 8602N                     | 8602H                     | 8666H                     |
|                       | 12"                    | 11"           | 8607N                     | 8607H                     | 8667H                     |
|                       | 13 1/2"                | 12"           | 8608N                     | 8608H                     | 8668H                     |
| 24"                   | 3"                     | 2"            | 8610N                     | 8610H                     | 8671H                     |
|                       | 4 1/2"                 | 3 1/2"        | 8611N                     | 8611H                     | 8672H                     |
|                       | 6"                     | 5"            | 8612N                     | 8612H                     | 8673H                     |
|                       | 7 1/2"                 | 6 1/2"        | 8613N                     | 8613H                     | 8674H                     |
|                       | 9"                     | 8"            | 8615N                     | 8615H                     | 8675H                     |
|                       | 10 1/2"                | 9 1/2"        | 8616N                     | 8616H                     | 8676H                     |
|                       | 12"                    | 11"           | 8614N                     | 8614H                     | 8677H                     |
|                       | 13 1/2"                | 12"           | 8617N                     | 8617H                     | 8678H                     |

Note: All Drawer part numbers listed above do not include dividers.

**Important ordering considerations:**

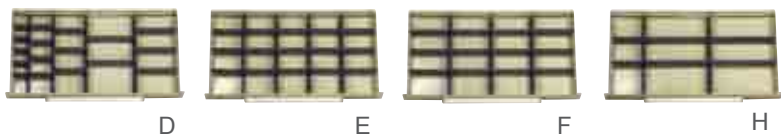
- A shelf should be positioned above each group of drawers
- **Do not exceed 36" vertical spacing of continuous drawers**
- Handles include label holder, plastic cover strip and end caps
- Inside clear width: 36" - 31 7/8" / 48" - 43 1/4"
- Inside clear depth: 18" - 16 5/16" / 24" - 22 5/16"

**Divider kits - 36" wide**

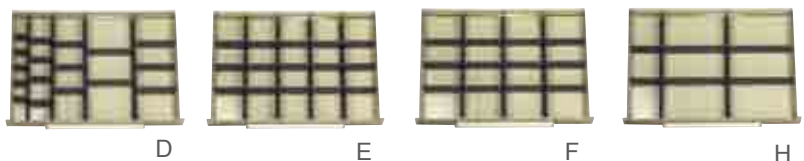
| Width | For Drawer Height | Divider Set | 18" Deep Divider Kit | 24" Deep Divider Kit |
|-------|-------------------|-------------|----------------------|----------------------|
| 36"   | 3"                | D           | 4173D10              | 4183D10              |
|       | 3"                | E           | 4173E10              | 4183E10              |
|       | 3"                | F           | 4173F10              | 4183F10              |
|       | 3"                | H           | 4173H10              | 4183H10              |
|       | 4 1/2"            | D           | 4174D15              | 4184D15              |
|       | 4 1/2"            | E           | 4174E15              | 4184E15              |
|       | 4 1/2"            | F           | 4174F15              | 4184F15              |
|       | 4 1/2"            | H           | 4174H15              | 4184H15              |
|       | 6" and up         | D           | 4175D20              | 4185D20              |
|       | 6" and up         | E           | 4175E20              | 4185E20              |
|       | 6" and up         | F           | 4175F20              | 4185F20              |
|       | 6" and up         | H           | 4175H20              |                      |

4185H20

**18" Deep**



**24" Deep**



**Important ordering considerations:**

- When selecting divider kits select the correct height of partitions and dividers for specific drawers being ordered
- All dividers are smooth office gray in color

A standard color chart is available at the beginning of each section with a more detailed one on page 126.

**Divider kits - 48" wide**

| Width | For Drawer Height | Divider Set | 18" Deep Divider Kit | 24" Deep Divider Kit |
|-------|-------------------|-------------|----------------------|----------------------|
| 48"   | 3"                | D           | 4176D10              | 4186D10              |
|       | 3"                | E           | 4176E10              | 4186E10              |
|       | 3"                | F           | 4176F10              | 4186F10              |
|       | 3"                | H           | 4176H10              | 4186H10              |
|       | 4 1/2"            | D           | 4177D15              | 4187D15              |
|       | 4 1/2"            | E           | 4177E15              | 4187E15              |
|       | 4 1/2"            | F           | 4177F15              | 4187F15              |
|       | 4 1/2"            | H           | 4177H15              | 4187H15              |
|       | 6" and up         | D           | 4178D20              | 4188D20              |
|       | 6" and up         | E           | 4178E20              | 4188E20              |
|       | 6" and up         | F           | 4178F20              | 4188F20              |
|       | 6" and up         | H           | 4178H20              | 4188H20              |

**Hinged double doors for V-Grip™ shelving**

- Rigid door and frame assembly, sturdy hinges, 3-point latches
- Attaches quickly and easily to V-Grip™ shelving units



**Doors for shelving (W x H)**

| Description   | Part No.  |
|---------------|-----------|
| 36" x 42"     | 18043     |
| 36" x 34 1/2" | 18036*    |
| 36" x 42"     | 18043*    |
| 36" x 72"     | 18035-72  |
| 36" x 78"     | 18035-78* |
| 36" x 84"     | 18035*    |
| 42" x 84"     | 44979A    |
| 48" x 84"     | 18435     |
| 48" x 42"     | 18443     |
| 48" x 34 1/4" | 18436     |
| 48" x 34 1/2" | 18436*    |
| 48" x 42"     | 18443*    |
| 48" x 72"     | 18435-72  |
| 48" x 78"     | 18435-78* |
| 48" x 84"     | 18435*    |

\*For these doors, add QV to the end of the part number for Quick View doors. Lock and Key included.



6620



6615/6613

**Label holders**

| Description (H x W)             | Part No. |
|---------------------------------|----------|
| 1 1/8" x 34" Label Holder       | 6615     |
| 1 1/8" x 46" Label Holder       | 6613     |
| 1" x 6" Plastic (for wire only) | 6620     |

**Full height shelf dividers**

(H x D)

| Description   | Part No. |
|---------------|----------|
| 2" x 12"      | 8049     |
| 4 1/2" x 12"  | 8018     |
| 6" x 12"      | 8019     |
| 7 1/2" x 12"  | 8020     |
| 9" x 12"      | 8021     |
| 10 1/2" x 12" | 8022     |
| 12" x 12"     | 8023     |
| 13 1/2" x 12" | 8024     |
| 15" x 12"     | 8025     |
| 16 1/2" x 12" | 8026     |
| 2" x 18"      | 8093     |
| 4 1/2" x 18"  | 8090     |
| 6" x 18"      | 8094     |
| 7 1/2" x 18"  | 8095     |
| 9" x 18"      | 8096     |
| 10 1/2" x 18" | 8097     |
| 12" x 18"     | 8098     |
| 13 1/2" x 18" | 8099     |
| 15" x 18"     | 810313   |
| 16 1/2" x 18" | 8091     |
| 18" x 18"     | 8092     |
| 6" x 24"      | 8119     |
| 7 1/2" x 24"  | 8120     |
| 9" x 24"      | 8121     |
| 10 1/2" x 24" | 8122     |
| 12" x 24"     | 8123     |
| 13 1/2" x 24" | 8124     |
| 15" x 24"     | 8125     |
| 16 1/2" x 24" | 8126     |
| 10 1/2" x 36" | 8133     |
| 12" x 36"     | 8134     |
| Speediclip    | 10226    |

(Speediclip holds shelf dividers to shelves above and below.)

**18" Deep**



**24" Deep**



**Important ordering considerations:**

- When selecting divider kits select the correct height of partitions and dividers for specific drawers being ordered
- All dividers are smooth office gray in color



Close the top of any V-Grip Bulk Rack upright. Easy to attach - simply tap its triangular base into the upright. May also be used as floor glide to protect all floors. Made of high-impact plastic, it will withstand any load within the capacity of the upright itself.

**Top/bottom cap**

| Description             | Part No. |
|-------------------------|----------|
| Top or Bottom Cap/White | 10177W   |
| Top or Bottom Cap/Black | 10177B   |



Ribbed and slotted partitions fit easily into drawers, running the full depth of the drawer from front-to-back. Adjustable in 3/4" increments, they may be used alone, or with dividers. Metal screws are supplied for fastening to drawer bottoms.

**Partitions**

| Partition Height | To Fit Drawer Height | To Fit 18" Deep Drawers | To Fit 24" Deep Drawers |
|------------------|----------------------|-------------------------|-------------------------|
| 2"               | 3"                   | 8780N                   | 8790N                   |
| 3"               | 4 1/2"               | 8781N                   | 8791N                   |
| 4 1/2"           | 6" and up            | 8782N                   |                         |

All partitions are smooth office gray in color



To further expand the possibilities in creating your own drawer design, we offer a variety of individual dividers. Use them with front-to-back partitions to make compartments of all sizes. Spaces across drawers; each 3/4" wide  
36" wide drawers — 40 spaces  
48" wide drawers — 53 spaces

**Individual dividers**

| Divider Width | Spaces | For 3" High Drawers | For 4 1/2" High Drawers | For 6" High Drawers and Up |
|---------------|--------|---------------------|-------------------------|----------------------------|
| 3 3/32"       | 4      | 8834                | 8844                    | 8854                       |
| 4 11/16"      | 6      | 8835                | 8845                    | 8855                       |
| 6 9/32"       | 8      | 8836                | 8846                    | 8856                       |
| 7 7/8"        | 10     | 8837                | 8847                    | 8857                       |
| 9 7/16"       | 12     | 8838                | 8848                    | 8858                       |
| 12 11/16"     | 16     | 8839                | 8849                    | 8859                       |

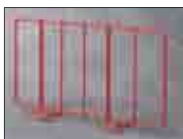
- All dividers are smooth office gray in color

A standard color chart is available at the beginning of each section with a more detailed one on page 126.



**Sliding dividers (H x D)**

| Description                           | Part No. |
|---------------------------------------|----------|
| 2 <sup>3</sup> / <sub>4</sub> " x 12" | 8110     |
| 4 <sup>1</sup> / <sub>2</sub> " x 12" | 8111     |
| 5 <sup>3</sup> / <sub>4</sub> " x 12" | 8112     |
| 7 <sup>1</sup> / <sub>4</sub> " x 12" | 8113     |
| 2 <sup>3</sup> / <sub>4</sub> " x 18" | 8103     |
| 4 <sup>1</sup> / <sub>2</sub> " x 18" | 8104     |
| 5 <sup>3</sup> / <sub>4</sub> " x 18" | 8105     |
| 7 <sup>1</sup> / <sub>4</sub> " x 18" | 8106     |
| 2 <sup>3</sup> / <sub>4</sub> " x 24" | 8114     |
| 4 <sup>1</sup> / <sub>2</sub> " x 24" | 8115     |
| 5 <sup>3</sup> / <sub>4</sub> " x 24" | 8116     |
| 7 <sup>1</sup> / <sub>4</sub> " x 24" | 8117     |



**Wire dividers for wire shelves (H x D)**

| Description | Part No. |
|-------------|----------|
| 9" x 18"    | 8101     |
| 9" x 24"    | 8102     |



**Plastic containers (W x D x H)**

| Color  | Part No. |
|--|----------|
| White (11" x 22 <sup>3</sup> / <sub>4</sub> " x 7")                              | 8501W    |
| Yellow (11" x 22 <sup>3</sup> / <sub>4</sub> " x 7")                             | 8501Y    |
| Blue (11" x 22 <sup>3</sup> / <sub>4</sub> " x 7")                               | 8501B    |
| Clear (11" x 22 <sup>3</sup> / <sub>4</sub> " x 7")                              | 8501C    |
| Red (11" x 22 <sup>3</sup> / <sub>4</sub> " x 7")                                | 8501R    |
| Black (11" x 22 <sup>3</sup> / <sub>4</sub> " x 7")                              | 8501BLK  |
| Container Lid (11" x 22 <sup>3</sup> / <sub>4</sub> " x 7")                      | 8502     |
| (3 Across fits 36" wide shelf)   |          |
| White (8 <sup>1</sup> / <sub>4</sub> " x 22 <sup>3</sup> / <sub>4</sub> " x 6")  | 8512W    |
| Yellow (8 <sup>1</sup> / <sub>4</sub> " x 22 <sup>3</sup> / <sub>4</sub> " x 6") | 8512Y    |
| Blue (8 <sup>1</sup> / <sub>4</sub> " x 22 <sup>3</sup> / <sub>4</sub> " x 6")   | 8512B    |
| (4 Across fits 36" wide shelf)   |          |

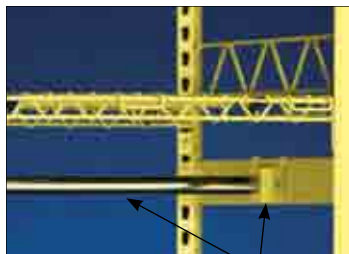


Add mobility to any V-Grip™ steel or wire shelving or rack 18" or more deep. capacity 800 lbs. per unit.

**Mobile Perimeter base (Add 6" to height)**

| Depth 36" wide | 48" wide | 60" wide | 72" wide | 96" wide | Handles |            |
|----------------|----------|----------|----------|----------|---------|------------|
| 18"            | 4699C13  | 4699C14  | 4699C15  | 4699C16  | 4699C18 | 18"D 11580 |
| 24"            | 4699C23  | 4699C24  | 4699C25  | 4699C26  | 4699C28 | 24"D 11581 |
| 30"            | 4699C03  | 4699C04  | 4699C05  | 4699C06  | 4699C08 |            |
| 36"            | 4699C33  | 4699C34  | 4699C35  | 4699C36  | 4699C38 |            |
| 48"            | 4699C43  | 4699C44  | 4699C45  | 4699C46  | 4699C48 |            |

Note: Includes 2 swivel and 2 stationary heavy duty casters. when ordering V-Grip™ uprights with mobile base, add suffix "TU" after part number for upright. Ex: 5005TU. Not recommended over 66"H.



Hanger bar & bracket

**Hanger bar and bracket**

(Includes rod, brackets and one support channel) (D x W)

| Description | Part No. |
|-------------|----------|
| 12" x 36"   | 9753-12  |
| 12" x 48"   | 9754-12  |
| 18" x 36"   | 9753-18  |
| 18" x 48"   | 9754-18  |
| 24" x 36"   | 9753-24  |
| 24" x 48"   | 9754-24  |
| 36" x 36"   | 9753-36  |
| 36" x 48"   | 9754-36  |

Order one end support channel to each section to finish row.

|          |      |
|----------|------|
| 12" deep | 7731 |
| 18" deep | 7732 |
| 24" deep | 7733 |
| 36" deep | 7734 |

Note: 150 lb. cap. distributed load.

**Splicer**



| Description                         | Part No. |
|-------------------------------------|----------|
| To splice 2 V-Grip posts            | 5568     |
| For Bulk Rack above V-Grip shelving | 5568BS   |
| For Bulk Rack above Bulk Rack       | 5566     |



10381 - Common upright clamp  
13037 - Dart clip

**Miscellaneous parts**

| Description                            | Part No. |
|--|----------|
| Common upright clamp                   | 10381    |
| Corner reinforcement clip              | 7680     |
| Back panel bracket for closed shelving | 10388    |
| Bolt and nut (3/16" x 1/4")            | 13001    |
| Bolt and nut (3/16" x 3/8")            | 13000    |
| Panel clip                             | 10332    |
| Speedy clip                            | 10226    |
| Upright splicer                        | 5568     |
| Corner bracket L.H.                    | 7698L    |
| Corner bracket R.H.                    | 7698R    |
| Flush bracket, L.H.                    | 7700L    |
| Flush bracket, R.H.                    | 7700R    |
| Back-to-back bracket for wire shelving | 7750     |
| V-grip floor plates                    | 9826     |
| #Rod (3/16" x 79")                     | 9705     |
| #Rod (3/16" x 85")                     | 9720     |
| Aisle safety rail, 3'                  | 10043V   |
| Aisle safety rail, 4'                  | 10044V   |
| Floor anchor L.H.                      | 7695L    |
| Floor anchor R.H.                      | 7695R    |
| Dart clip for beams                    | 13037    |
| Dart clip for label holder             | 13041    |
| Aisle bracket L.H.                     | 7693L    |
| Aisle bracket R.H.                     | 7693R    |
| Foot/leveler                           | 13149    |
| V-grip™ top mount bracket, left        | 7692L    |
| V-grip™ top mount bracket, right       | 7692R    |
| 18" D handle (white)                   | 11580    |
| 24" D handle (white)                   | 11581    |
| 30" D handle (white)                   | 811030   |
| 36" D handle (white)                   | 44080-03 |

**Seismic accessories**

| Description               | Part No. |
|---------------------------|----------|
| Back panel bracket, pair  | 190301U  |
| Back brace, pair, 36"     | 190302U  |
| Back brace, pair, 42"     | 190308U  |
| Back brace, pair, 48"     | 190303U  |
| Back brace, pair, 96"     | 190309U  |
| End sway brace, pair, 12" | 190304U  |
| End sway brace, pair, 18" | 190305U  |
| End sway brace, pair, 24" | 190306U  |
| End sway brace, pair, 36" | 190307U  |
| Floor anchor-center       | 190317A  |
| Floor anchor (left hand)  | 190319A  |
| Floor anchor (right hand) | 190320A  |
| Shelf locking clip        | 10231    |

**Double entry beams (2 required)**

| Description | Part No. |
|-------------|----------|
| 24" Long    | 811724A  |
| 36" Long    | 9403     |
| 48" Long    | 9404     |



**Brackets** (flush front 7700 L & R and corner 7698 L & R) allow easy attachment of catwalks to V-Grip™ uprights.



Floor anchor fastens shelving to floor for increased stability. order no. **7695L** (left hand) or no. **7695R** (right hand). Seismic floor anchor (center) **190317A**.



# V-Grip™ Versarack

- Versarack provides the reliability and flexibility of the V-Grip™ upright post and the choice of particle board, wire, or steel deck shelves.
- Fast and easy assembly.
- Ideal for bulk parts, archival records, and back room storage applications.
- Versarack offers easy assembly and clear spans for double-entry units.



Shelf reinforcements provide additional capacity for particleboard and wire shelf applications.



Low profile shelf beams are 1/2" high and adjustable on 1/2" centers.



Shelf beams have a 2-point wedge lock connection for maximum rigidity.



**V-Grip™ Versarack - Preconfigured Units**

**Decking:** second “.” in catalog number designates no decking. Substitute “P” for particle board decking, “D” for corrugated steel decking, or “W” for wire decking.

**Side and back panels are not available with Versarack**

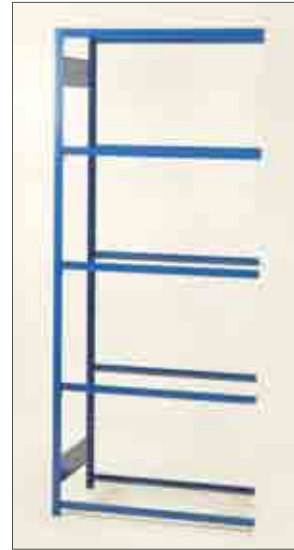
**Versarack™ (84” high units) 5 Shelves**

| Width            | Depth | Starter       | Add-on        |
|------------------|-------|---------------|---------------|
| <b>36” Width</b> |       |               |               |
| 12”              |       | VVR-361284-5S | VVR-361284-5A |
| 15”              |       | VVR-361584-5S | VVR-361584-5A |
| 18”              |       | VVR-361884-5S | VVR-361884-5A |
| 24”              |       | VVR-362484-5S | VVR-362484-5A |
| 30”              |       | VVR-363084-5S | VVR-363084-5A |
| 36”              |       | VVR-363684-5S | VVR-363684-5A |
| <b>42” Width</b> |       |               |               |
| 12”              |       | VVR-421284-5S | VVR-421284-5A |
| 15”              |       | VVR-421584-5S | VVR-421584-5A |
| 18”              |       | VVR-421884-5S | VVR-421884-5A |
| 24”              |       | VVR-422484-5S | VVR-422484-5A |
| 30”              |       | VVR-423084-5S | VVR-423084-5A |
| 36”              |       | VVR-423684-5S | VVR-423684-5A |
| <b>48” Width</b> |       |               |               |
| 12”              |       | VVR-481284-5S | VVR-481284-5A |
| 15”              |       | VVR-481584-5S | VVR-481584-5A |
| 18”              |       | VVR-481884-5S | VVR-481884-5A |
| 24”              |       | VVR-482484-5S | VVR-482484-5A |
| 30”              |       | VVR-483084-5S | VVR-483084-5A |
| 36”              |       | VVR-483684-5S | VVR-483684-5A |

**Note: must also order decking.**



Starter



Add-on



Starter with particle board decking



Starter with corrugated steel decking



Starter with wire decking

**Shelving & Racks**

**V-Grip™ Versarack - Components to achieve maximum capacities**



**Shelf beams**

| Description | capacity | Part No. |
|-------------|----------|----------|
| 36” Wide    | 890 lbs. | VVR-B36  |
| 42” Wide    | 720 lbs. | VVR-B42  |
| 48” Wide    | 550 lbs. | VVR-B48  |

Order 2 shelf beams for each shelf.  
\*Uniform distributed load



**Shelf reinforcements**

(front to back)

| Description | Part No. |
|-------------|----------|
| 15” Deep    | VVR-R15  |
| 18” Deep    | VVR-R18  |
| 24” Deep    | VVR-R24  |
| 30” Deep    | VVR-R30  |
| 36” Deep    | VVR-R36  |

Although reinforcements are optional, when storing heavy loads, 3 per shelf are recommended on shelf depths of 24”, 30”, 36”



**End brace plates**

| Description   | Part No. |
|---------------|----------|
| 12” End, pair | 6412     |
| 15” End, pair | 6411     |
| 18” End, pair | 6413     |
| 24” End, pair | 6414     |
| 30” End, pair | 6406     |
| 36” End, pair | 6415     |
| 48” End, pair | 6410     |

A standard color chart is available at the beginning of each section with a more detailed one on page 126.

**V-Grip™ VersaRack - Components**



**Particle board shelves (5/8" thick)**  
(W x D)

| Description | Part No.  |
|-------------|-----------|
| 36" x 12"   | VVR-P3612 |
| 36" x 15"   | VVR-P3615 |
| 36" x 18"   | VVR-P3618 |
| 36" x 24"   | VVR-P3624 |
| 36" x 30"   | VVR-P3630 |
| 36" x 36"   | VVR-P3636 |
| 42" x 12"   | VVR-P4212 |
| 42" x 15"   | VVR-P4215 |
| 42" x 18"   | VVR-P4218 |
| 42" x 24"   | VVR-P4224 |
| 42" x 30"   | VVR-P4230 |
| 42" x 36"   | VVR-P4236 |
| 48" x 12"   | VVR-P4812 |
| 48" x 15"   | VVR-P4815 |
| 48" x 18"   | VVR-P4818 |
| 48" x 24"   | VVR-P4824 |
| 48" x 30"   | VVR-P4830 |
| 48" x 36"   | VVR-P4836 |

shelf beams not included.  
see page 18 for shelf beams.



**Corrugated steel shelves**  
(W x D)

| Description | Part No.  |
|-------------|-----------|
| 36" x 12"   | VVR-D3612 |
| 36" x 15"   | VVR-D3615 |
| 36" x 18"   | VVR-D3618 |
| 36" x 24"   | VVR-D3624 |
| 36" x 30"   | VVR-D3630 |
| 36" x 36"   | VVR-D3636 |
| 42" x 12"   | VVR-D4212 |
| 42" x 15"   | VVR-D4215 |
| 42" x 18"   | VVR-D4218 |
| 42" x 24"   | VVR-D4224 |
| 42" x 30"   | VVR-D4230 |
| 42" x 36"   | VVR-D4236 |
| 48" x 12"   | VVR-D4812 |
| 48" x 15"   | VVR-D4815 |
| 48" x 18"   | VVR-D4818 |
| 48" x 24"   | VVR-D4824 |
| 48" x 30"   | VVR-D4830 |
| 48" x 36"   | VVR-D4836 |

shelf beams not included.  
see page 18 for shelf beams.



**Wire shelves**  
(W x D)

| Description | Part No.  |
|-------------|-----------|
| 36" x 12"   | VVR-W3612 |
| 36" x 15"   | VVR-W3615 |
| 36" x 18"   | VVR-W3618 |
| 36" x 24"   | VVR-W3624 |
| 36" x 30"   | VVR-W3630 |
| 36" x 36"   | VVR-W3636 |
| 42" x 12"   | VVR-W4212 |
| 42" x 15"   | VVR-W4215 |
| 42" x 18"   | VVR-W4218 |
| 42" x 24"   | VVR-W4224 |
| 42" x 30"   | VVR-W4230 |
| 42" x 36"   | VVR-W4236 |
| 48" x 12"   | VVR-W4812 |
| 48" x 15"   | VVR-W4815 |
| 48" x 18"   | VVR-W4818 |
| 48" x 24"   | VVR-W4824 |
| 48" x 30"   | VVR-W4830 |
| 48" x 36"   | VVR-W4836 |

shelf beams not included.  
see page 18 for shelf beams.

Shelving & Racks



**Open shelving ends (D x H)**

| Description     | Part No. |
|-----------------|----------|
| 12" x 84" Open  | 6702     |
| 18" x 84" Open  | 6712     |
| 24" x 84" Open  | 6722     |
| 36" x 84" Open  | 6732     |
| 12" x 96" Open  | 6703     |
| 18" x 96" Open  | 6713     |
| 24" x 96" Open  | 6723     |
| 36" x 96" Open  | 6733     |
| 12" x 120" Open | 6705     |
| 18" x 120" Open | 6715     |
| 24" x 120" Open | 6725     |
| 36" x 120" Open | 6735     |
| 12" x 144" Open | 6741     |
| 18" x 144" Open | 6747     |
| 24" x 144" Open | 6753     |
| 36" x 144" Open | 6759     |
| 12" x 180" Open | 6743     |
| 18" x 180" Open | 6749     |
| 24" x 180" Open | 6755     |
| 36" x 180" Open | 6761     |

84" and 96" high open shelving ends come with 2 upright posts and 2 end brace plates.



**Closed shelving ends (D x H)**

| Description       | Part No. |
|-------------------|----------|
| 12" x 84" Closed  | 6707     |
| 18" x 84" Closed  | 6717     |
| 24" x 84" Closed  | 6727     |
| 36" x 84" Closed  | 6737     |
| 12" x 96" Closed  | 6708     |
| 18" x 96" Closed  | 6718     |
| 24" x 96" Closed  | 6728     |
| 36" x 96" Closed  | 6738     |
| 12" x 120" Closed | 6710     |
| 18" x 120" Closed | 6720     |
| 24" x 120" Closed | 6730     |
| 36" x 120" Closed | 6740     |
| 12" x 144" Closed | 6744     |
| 18" x 144" Closed | 6750     |
| 24" x 144" Closed | 6756     |
| 36" x 144" Closed | 6762     |
| 12" x 180" Closed | 6746     |
| 18" x 180" Closed | 6752     |
| 24" x 180" Closed | 6758     |
| 36" x 180" Closed | 6764     |

84" high closed shelving ends come with 2 upright posts and 2 end panels.

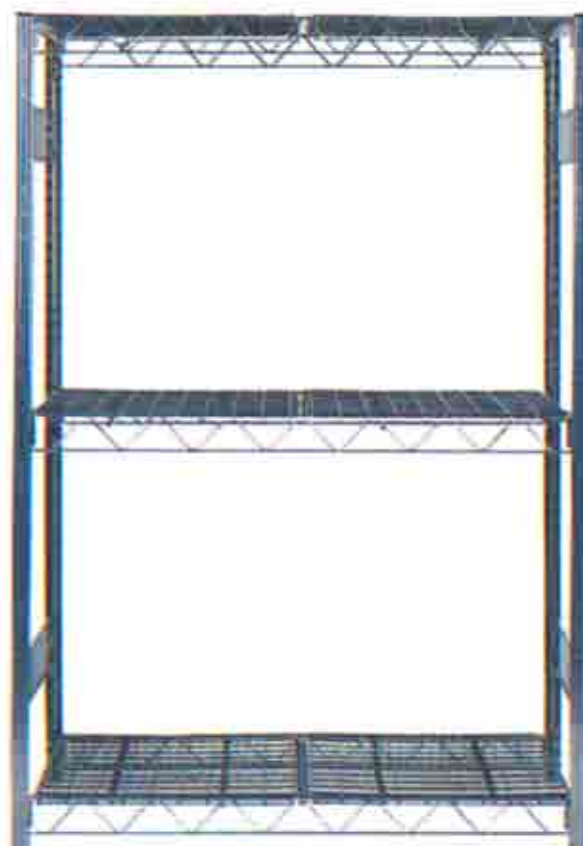
96" high closed shelving ends come with 2 upright posts and 3 end panels.

Standard color is white regardless of shelf color

A standard color chart is available at the beginning of each section with a more detailed one on page 126.

# V-Grip™ Wire Rack

V-Grip Wire Racks provide the ideal solution when storing medium to heavy loads in an environment where air and light flow are important. Wire trusses provide 3-point rigid connection with V-Grip upright post for maximum rigidity without use of sway braces for a cleaner look and easier installation.



Wire Rack

## V-Grip™ Wire Rack Components

### Wire rack truss beam (W x H)

| Description  | Part No. |
|--------------|----------|
| 48" x 3 1/4" | 9484     |
| 72" x 3 1/2" | 9486     |
| 96" x 4 1/4" | 9488     |

### Wire rack deck grid (W x D) (fits over wire truss or solid beam)

| Description | Part No. |
|-------------|----------|
| 24" x 24"   | 6092     |
| 24" x 36"   | 6093     |
| 24" x 48"   | 6094     |

Shelving & Racks

### Three shelf wire racks

|                         | Depth | Height | 48" Wide |          | 72" Wide |          | 96" Wide |          | Extra shelf   |         |
|-------------------------|-------|--------|----------|----------|----------|----------|----------|----------|---------------|---------|
|                         |       |        | Starter  | Add-on   | Starter  | Add-on   | Starter  | Add-on   |               |         |
| 1,500 lbs.<br>per shelf | 24"   | 60"    | 1524-05S | 1524-05A | 1526-05S | 1526-05A | 1528-05S | 1528-05A | 24" D x 48" W | 6092-02 |
|                         |       | 72"    | 1524-06S | 1524-06A | 1526-06S | 1526-06A | 1528-06S | 1528-06A | 24" D x 72" W | 6092-03 |
|                         |       | 84"    | 1524-07S | 1524-07A | 1526-07S | 1526-07A | 1528-07S | 1528-07A | 24" D x 96" W | 6092-04 |
| 36"                     | 60"   | 60"    | 1534-05S | 1534-05A | 1536-05S | 1536-05A | 1538-05S | 1538-05A | 36" D x 48" W | 6093-02 |
|                         |       | 72"    | 1534-06S | 1534-06A | 1536-06S | 1536-06A | 1538-06S | 1538-06A | 36" D x 72" W | 6093-03 |
|                         |       | 84"    | 1534-07S | 1534-07A | 1536-07S | 1536-07A | 1538-07S | 1538-07A | 36" D x 96" W | 6093-04 |
| 48"                     | 60"   | 60"    | 1544-05S | 1544-05A | 1546-05S | 1546-05A | 1548-05S | 1548-05A | 48" D x 48" W | 6094-02 |
|                         |       | 72"    | 1544-06S | 1544-06A | 1546-06S | 1546-06A | 1548-06S | 1548-06A | 48" D x 72" W | 6094-03 |
|                         |       | 84"    | 1544-07S | 1544-07A | 1546-07S | 1546-07A | 1548-07S | 1548-07A | 48" D x 96" W | 6094-04 |

Shelves are adjustable on 1 1/2" Centers. Features Wire Shelves and Wire Trusses.

### Four shelf wire racks

|                         | Depth | Height | 48" Wide |          | 72" Wide |          | 96" Wide |          | Extra shelf   |               |
|-------------------------|-------|--------|----------|----------|----------|----------|----------|----------|---------------|---------------|
|                         |       |        | Starter  | Add-on   | Starter  | Add-on   | Starter  | Add-on   |               |               |
| 1,500 lbs.<br>per shelf | 24"   | 96"    | 1524-08S | 1524-08A | 1526-08S | 1526-08A | 1528-08S | 1528-08A | 24" D x 48" W | 6092-02       |
|                         |       | 120"   | 1524-10S | 1524-10A | 1526-10S | 1526-10A | 1528-10S | 1528-10A | 24" D x 72" W | 6092-03       |
|                         |       | 36"    | 96"      | 1534-08S | 1534-08A | 1536-08S | 1536-08A | 1538-08S | 1538-08A      | 24" D x 96" W |
| 36"                     | 120"  | 96"    | 1534-10S | 1534-10A | 1536-10S | 1536-10A | 1538-10S | 1538-10A | 36" D x 48" W | 6093-02       |
|                         |       | 96"    | 1544-08S | 1544-08A | 1546-08S | 1546-08A | 1548-08S | 1548-08A | 36" D x 72" W | 6093-03       |
|                         |       | 120"   | 1544-10S | 1544-10A | 1546-10S | 1546-10A | 1548-10S | 1548-10A | 36" D x 96" W | 6093-04       |
| 48"                     | 96"   | 96"    | 1544-08S | 1544-08A | 1546-08S | 1546-08A | 1548-08S | 1548-08A | 48" D x 48" W | 6094-02       |
|                         |       | 120"   | 1544-10S | 1544-10A | 1546-10S | 1546-10A | 1548-10S | 1548-10A | 48" D x 72" W | 6094-03       |
|                         |       | 120"   | 1544-10S | 1544-10A | 1546-10S | 1546-10A | 1548-10S | 1548-10A | 48" D x 96" W | 6094-04       |

Shelves are adjustable on 1 1/2" Centers. Features Wire Shelves and Wire Trusses.

A standard color chart is available at the beginning of each section with a more detailed one on page 126.

# V-Grip™ Bulk Rack

V-Grip Bulk Rack is designed to accommodate longer spans and heavier loads than conventional shelving. Bulk Rack beams engage V-Grip upright posts providing a rigid connection. Bulk Rack levels are designed to carry load capacities from 1500 lbs. to 3000 lbs. per level, depending on beam span length and deck material used.

The unit to the right is shown with wire decking for the top shelf and corrugated steel decking unit bottom shelf.



## Three level bulk rack with decking

| Depth   | Height | 48" Wide |          | 60" Wide |          | 72" Wide |          | 96" Wide |          |
|---|--------|----------|----------|----------|----------|----------|----------|----------|----------|
|   |        | Starter  | Add-on   | Starter  | Add-on   | Starter  | Add-on   | Starter  | Add-on   |
| <b>Standard duty (from 1100 lbs. to 1500 lbs. For specific capacities see chart on page 26)</b> |        |          |          |          |          |          |          |          |          |
| 15"   | 60"    | 1005D41S | 1005D41A | 1005D51S | 1005D51A | 1005D61S | 1005D61A | —        | —        |
|   | 72"    | 1006D41S | 1006D41A | 1006D51S | 1006D51A | 1006D61S | 1006D61A | —        | —        |
| 24"   | 60"    | 1005D42S | 1005D42A | 1005D52S | 1005D52A | 1005D62S | 1005D62A | —        | —        |
|   | 72"    | 1006D42S | 1006D42A | 1006D52S | 1006D52A | 1006D62S | 1006D62A | —        | —        |
| 30"   | 60"    | 1007D42S | 1007D42A | 1007D52S | 1007D52A | 1007D62S | 1007D62A | —        | —        |
|   | 72"    | 1005D40S | 1005D40A | 1005D50S | 1005D50A | 1005D60S | 1005D60A | —        | —        |
| 36"   | 60"    | 1006D40S | 1006D40A | 1006D50S | 1006D50A | 1006D60S | 1006D60A | —        | —        |
|   | 72"    | 1007D40S | 1007D40A | 1007D50S | 1007D50A | 1007D60S | 1007D60A | —        | —        |
| 48"   | 60"    | 1005D43S | 1005D43A | 1005D53S | 1005D53A | 1005D63S | 1005D63A | —        | —        |
|   | 72"    | 1006D43S | 1006D43A | 1006D53S | 1006D53A | 1006D63S | 1006D63A | —        | —        |
|   | 84"    | 1007D43S | 1007D43A | 1007D53S | 1007D53A | 1007D63S | 1007D63A | —        | —        |
|   | 60"    | 1005D44S | 1005D44A | 1005D54S | 1005D54A | 1005D64S | 1005D64A | —        | —        |
|   | 72"    | 1006D44S | 1006D44A | 1006D54S | 1006D54A | 1006D64S | 1006D64A | —        | —        |
|   | 84"    | 1007D44S | 1007D44A | 1007D54S | 1007D54A | 1007D64S | 1007D64A | —        | —        |
| <b>Medium duty (from 1500 lbs. to 2000 lbs. For specific capacities see chart on page 26)</b>   |        |          |          |          |          |          |          |          |          |
| 15"   | 60"    | 1015D41S | 1015D41A | 1015D51S | 1015D51A | 1015D61S | 1015D61A | 1015D81S | 1015D81A |
|   | 72"    | 1016D41S | 1016D41A | 1016D51S | 1016D51A | 1016D61S | 1016D61A | 1016D81S | 1016D81A |
| 24"   | 60"    | 1015D42S | 1015D42A | 1015D52S | 1015D52A | 1015D62S | 1015D62A | 1015D82S | 1015D82A |
|   | 72"    | 1016D42S | 1016D42A | 1016D52S | 1016D52A | 1016D62S | 1016D62A | 1016D82S | 1016D82A |
| 30"   | 60"    | 1017D42S | 1017D42A | 1017D52S | 1017D52A | 1017D62S | 1017D62A | 1017D82S | 1017D82A |
|   | 72"    | 1015D40S | 1015D40A | 1015D50S | 1015D50A | 1015D60S | 1015D60A | 1015D80S | 1015D80A |
| 36"   | 60"    | 1016D40S | 1016D40A | 1016D50S | 1016D50A | 1016D60S | 1016D60A | 1016D80S | 1016D80A |
|   | 72"    | 1017D40S | 1017D40A | 1017D50S | 1017D50A | 1017D60S | 1017D60A | 1017D80S | 1017D80A |
| 48"   | 60"    | 1015D43S | 1015D43A | 1015D53S | 1015D53A | 1015D63S | 1015D63A | 1015D83S | 1015D83A |
|   | 72"    | 1016D43S | 1016D43A | 1016D53S | 1016D53A | 1016D63S | 1016D63A | 1016D83S | 1016D83A |
|   | 84"    | 1017D43S | 1017D43A | 1017D53S | 1017D53A | 1017D63S | 1017D63A | 1017D83S | 1017D83A |
|   | 60"    | 1015D44S | 1015D44A | 1015D54S | 1015D54A | 1015D64S | 1015D64A | 1015D84S | 1015D84A |
|   | 72"    | 1016D44S | 1016D44A | 1016D54S | 1016D54A | 1016D64S | 1016D64A | 1016D84S | 1016D84A |
|   | 84"    | 1017D44S | 1017D44A | 1017D54S | 1017D54A | 1017D64S | 1017D64A | 1017D84S | 1017D84A |
| <b>Heavy duty (over 2000 lbs. For specific capacities see chart on page 26)</b>                 |        |          |          |          |          |          |          |          |          |
| 15"   | 60"    | 1025D41S | 1025D41A | 1025D51S | 1025D51A | 1025D61S | 1025D61A | 1025D81S | 1025D81A |
|   | 72"    | 1026D41S | 1026D41A | 1026D51S | 1026D51A | 1026D61S | 1026D61A | 1026D81S | 1026D81A |
| 24"   | 60"    | 1025D42S | 1025D42A | 1025D52S | 1025D52A | 1025D62S | 1025D62A | 1025D82S | 1025D82A |
|   | 72"    | 1026D42S | 1026D42A | 1026D52S | 1026D52A | 1026D62S | 1026D62A | 1026D82S | 1026D82A |
| 30"   | 60"    | 1027D42S | 1027D42A | 1027D52S | 1027D52A | 1027D62S | 1027D62A | 1027D82S | 1027D82A |
|   | 72"    | 1025D40S | 1025D40A | 1025D50S | 1025D50A | 1025D60S | 1025D60A | 1025D80S | 1025D80A |
| 36"   | 60"    | 1026D40S | 1026D40A | 1026D50S | 1026D50A | 1026D60S | 1026D60A | 1026D80S | 1026D80A |
|   | 72"    | 1027D40S | 1027D40A | 1027D50S | 1027D50A | 1027D60S | 1027D60A | 1027D80S | 1027D80A |
| 48"   | 60"    | 1025D43S | 1025D43A | 1025D53S | 1025D53A | 1025D63S | 1025D63A | 1025D83S | 1025D83A |
|   | 72"    | 1026D43S | 1026D43A | 1026D53S | 1026D53A | 1026D63S | 1026D63A | 1026D83S | 1026D83A |
|   | 84"    | 1027D43S | 1027D43A | 1027D53S | 1027D53A | 1027D63S | 1027D63A | 1027D83S | 1027D83A |
|   | 60"    | 1025D44S | 1025D44A | 1025D54S | 1025D54A | 1025D64S | 1025D64A | 1025D84S | 1025D84A |
|   | 72"    | 1026D44S | 1026D44A | 1026D54S | 1026D54A | 1026D64S | 1026D64A | 1026D84S | 1026D84A |
|   | 84"    | 1027D44S | 1027D44A | 1027D54S | 1027D54A | 1027D64S | 1027D64A | 1027D84S | 1027D84A |

**DECKING:** "D" in catalog number represents corrugated steel decking. Substitute "W" for drop in wire decking (available in 24", 36", & 48" depths) or "-" for no decking.

A standard color chart is available at the beginning of each section with a more detailed one on page 126.

**Four level bulk rack with solid decking**

| Depth   | Height | 48" Wide |          | 60" Wide |          | 72" Wide |          | 96" Wide |        |
|---|--------|----------|----------|----------|----------|----------|----------|----------|--------|
|   |        | Starter  | Add-on   | Starter  | Add-on   | Starter  | Add-on   | Starter  | Add-on |
| <b>Standard duty (from 1100 lbs. to 1500 lbs. For specific capacities see chart on page 23)</b> |        |          |          |          |          |          |          |          |        |
| 24"   | 96"    | 1008D42S | 1008D42A | 1008D52S | 1008D52A | 1008D62S | 1008D62A | —        | —      |
|   | 120"   | 1010D42S | 1010D42A | 1010D52S | 1010D52A | 1010D62S | 1010D62A | —        | —      |
| 30"   | 96"    | 1008D40S | 1008D40A | 1008D50S | 1008D50A | 1008D60S | 1008D60A | —        | —      |
|   | 120"   | 1010D40S | 1010D40A | 1010D50S | 1010D50A | 1010D60S | 1010D60A | —        | —      |
| 36"   | 96"    | 1008D43S | 1008D43A | 1008D53S | 1008D53A | 1008D63S | 1008D63A | —        | —      |
|   | 120"   | 1010D43S | 1010D43A | 1010D53S | 1010D53A | 1010D63S | 1010D63A | —        | —      |
| 48"   | 96"    | 1008D44S | 1008D44A | 1008D54S | 1008D54A | 1008D64S | 1008D64A | —        | —      |
|   | 120"   | 1010D44S | 1010D44A | 1010D54S | 1010D54A | 1010D64S | 1010D64A | —        | —      |

| <b>Medium duty (from 1500 lbs. to 2000 lbs. For specific capacities see chart on page 23)</b> |      |          |          |          |          |          |          |          |          |
|---|------|----------|----------|----------|----------|----------|----------|----------|----------|
| 24"   | 96"  | 1018D42S | 1018D42A | 1018D52S | 1018D52A | 1018D62S | 1018D62A | 1018D82S | 1018D82A |
|   | 120" | 1020D42S | 1020D42A | 1020D52S | 1020D52A | 1020D62S | 1020D62A | 1020D82S | 1020D82A |
| 30"   | 96"  | 1018D40S | 1018D40A | 1018D50S | 1018D50A | 1018D60S | 1018D60A | 1018D80S | 1018D80A |
|   | 120" | 1020D40S | 1020D40A | 1020D50S | 1020D50A | 1020D60S | 1020D60A | 1020D80S | 1020D80A |
| 36"   | 96"  | 1018D43S | 1018D43A | 1018D53S | 1018D53A | 1018D63S | 1018D63A | 1018D83S | 1018D83A |
|   | 120" | 1020D43S | 1020D43A | 1020D53S | 1020D53A | 1020D63S | 1020D63A | 1020D83S | 1020D83A |
| 48"   | 96"  | 1018D44S | 1018D44A | 1018D54S | 1018D54A | 1018D64S | 1018D64A | 1018D84S | 1018D84A |
|   | 120" | 1020D44S | 1020D44A | 1020D54S | 1020D54A | 1020D64S | 1020D64A | 1020D84S | 1020D84A |

| <b>Heavy duty (over 2000 lbs. For specific capacities see chart on page 23)</b> |      |          |          |          |          |          |          |          |          |
|---|------|----------|----------|----------|----------|----------|----------|----------|----------|
| 24"   | 96"  | 1028D42S | 1028D42A | 1028D52S | 1028D52A | 1028D62S | 1028D62A | 1028D82S | 1028D82A |
|   | 120" | 1030D42S | 1030D42A | 1030D52S | 1030D52A | 1030D62S | 1030D62A | 1030D82S | 1030D82A |
| 30"   | 96"  | 1028D40S | 1028D40A | 1028D50S | 1028D50A | 1028D60S | 1028D60A | 1028D80S | 1028D80A |
|   | 120" | 1030D40S | 1030D40A | 1030D50S | 1030D50A | 1030D60S | 1030D60A | 1030D80S | 1030D80A |
| 36"   | 96"  | 1028D43S | 1028D43A | 1028D53S | 1028D53A | 1028D63S | 1028D63A | 1028D83S | 1028D83A |
|   | 120" | 1030D43S | 1030D43A | 1030D53S | 1030D53A | 1030D63S | 1030D63A | 1030D83S | 1030D83A |
| 48"   | 96"  | 1028D44S | 1028D44A | 1028D54S | 1028D54A | 1028D64S | 1028D64A | 1028D84S | 1028D84A |
|   | 120" | 1030D44S | 1030D44A | 1030D54S | 1030D54A | 1030D64S | 1030D64A | 1030D84S | 1030D84A |

**Five level bulk rack with solid decking**

| Depth   | Height | 48" Wide  |          | 60" wide |          | 72" wide |          | 96" wide |        |
|---|--------|-----------|----------|----------|----------|----------|----------|----------|--------|
|   |        | Starter   | Add-on   | Starter  | Add-on   | Starter  | Add-on   | Starter  | Add-on |
| <b>Standard duty (from 1100 lbs. to 1500 lbs. For specific capacities see chart on page 26)</b> |        |           |          |          |          |          |          |          |        |
| 36"   | 180"   | 1012D43S  | 1012D43A | 1012D53S | 1012D53A | 1012D63S | 1012D63A | —        | —      |
| 48"   | 180"   | 1012 D44S | 1012D44A | 1012D54S | 1012D54A | 1012D64S | 1012D64A | —        | —      |

| <b>Medium duty (from 1500 lbs. to 2000 lbs. For specific capacities see chart on page 26)</b> |      |          |          |          |          |          |          |          |          |
|---|------|----------|----------|----------|----------|----------|----------|----------|----------|
| 36"   | 180" | 1022D43S | 1022D43A | 1022D53S | 1022D53A | 1022D63S | 1022D63A | 1022D83S | 1022D83A |
| 48"   | 180" | 1022D44S | 1022D44A | 1022D54S | 1022D54A | 1022D64S | 1022D64A | 1022D84S | 1022D84A |

DECKING: "D" in Catalog number represents Corrugated Steel Decking. Substitute "W" for drop in Wire Decking or "-" for no decking.

**Bulk Rack shelving options**



**Solid beams**

- 3 lugs on each beam connector locks securely to post
- Adjusts on 1 1/2" centers



**Drop In Wire decking**

Capacity to 2667 lbs.

- Lets air, light and water pass through
- Offset between beam and wire shelving is .2625+/- or just over 1/4"



**Solid shelf**

Capacity to 2763 lbs.

- Solid corrugated steel
- Versatile: Use ridge side up or flat channeled surface

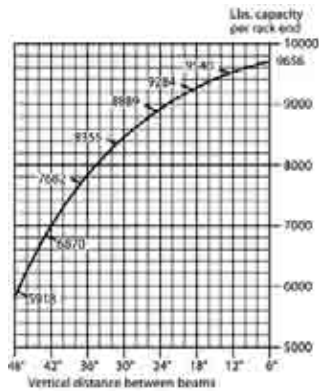
A standard color chart is available at the beginning of each section with a more detailed one on page 126.

**Bulk Rack load capacities**



**Rack Capacities**

Rack end capacity is not a factor under most circumstances. However, if you intend to space beam levels unusually far apart, check your plan to insure that the cumulative load on the lower portions of each rack end is within the limits shown on this chart. Rack ends are designed with a safety factor of 1.92. Horizontal beams are designed with a safety factor of 1.65.



**Load Capacities of V-Grip Bulk Rack solid beams**

**Light Duty\***

| Width | Beam Height | Capacity(lbs.) | Part No. |
|-------|-------------|----------------|----------|
| 4'    | 25/8"       | 1460           | 9434     |
| 5'    | 25/8"       | 1208           | 9435     |
| 6'    | 25/8"       | 1163           | 9436     |

**Medium Duty\***

| Width | Beam Height | Capacity(lbs.) | Part No. |
|-------|-------------|----------------|----------|
| 4'    | 27/8"       | 2112           | 9444     |
| 5'    | 27/8"       | 1690           | 9445     |
| 6'    | 27/8"       | 1622           | 9446     |
| 7'    | 33/4"       | 1557           | 830284M  |
| 8'    | 33/4"       | 1557           | 9448     |

**Heavy Duty\***

| Width | Beam Height | Capacity(lbs.) | Part No. |
|-------|-------------|----------------|----------|
| 4'    | 31/2"       | 3454           | 9454     |
| 5'    | 31/2"       | 2763           | 9455     |
| 6'    | 31/2"       | 2630           | 9456     |
| 7'    | 33/4"       | 2667           | 830284H  |
| 8'    | 33/4"       | 2667           | 9458     |

\*Capacities are in lbs. per pair of beams

**Load Capacities of drop in wire grid decking (for solid beams)**

| Length | Depth of rack | Capacity(lbs.) | Part No. |
|--------|---------------|----------------|----------|
| 4'     | 24"           | 1500           | 16324W   |
| 5'     | 24"           | 1500           | 16325W   |
| 6'     | 24"           | 2250           | 16326W   |
| 8'     | 24"           | 3000           | 16328W   |
| 4'     | 36"           | 1500           | 16334W   |
| 5'     | 36"           | 1500           | 16335W   |
| 6'     | 36"           | 2250           | 16336W   |
| 8'     | 36"           | 3000           | 16338W   |
| 4'     | 48"           | 1500           | 16344W   |
| 5'     | 48"           | 1500           | 16345W   |
| 6'     | 48"           | 2250           | 16346W   |
| 8'     | 48"           | 3000           | 16348W   |

Note: To determine shelf level capacity with decking, use beam or decking capacity, whichever is less.

**Load Capacities of solid steel decking (for solid beams)**

| Length | Depth of rack | Capacity(lbs.) | Part No. |
|--------|---------------|----------------|----------|
| 4'     | 15"           | 2407           | 16314    |
| 5'     | 15"           | 3003           | 16315    |
| 6'     | 15"           | 3611           | 16316    |
| 8'     | 15"           | 4815           | 16318    |
| 4'     | 24"           | 1852           | 16324    |
| 5'     | 24"           | 2310           | 16325    |
| 6'     | 24"           | 2778           | 16326    |
| 8'     | 24"           | 3704           | 16328    |
| 4'     | 30"           | 1435           | 16354    |
| 5'     | 30"           | 1794           | 16355    |
| 6'     | 30"           | 2152           | 16356    |
| 8'     | 30"           | 2870           | 16358    |
| 4'     | 36"           | 1196           | 16334    |
| 5'     | 36"           | 1495           | 16335    |
| 6'     | 36"           | 1794           | 16336    |
| 8'     | 36"           | 2392           | 16338    |
| 4'     | 48"           | 1192           | 16344    |
| 5'     | 48"           | 1490           | 16345    |
| 6'     | 48"           | 1788           | 16346    |
| 8'     | 48"           | 2384           | 16348    |

Note: To determine shelf level capacity with decking, use beam or decking capacity, whichever is less.

A standard color chart is available at the beginning of each section with a more detailed one on page 126.

**V-Grip™ Bulk Rack shelving components**

Designed with versatility to fit your needs

- Accessories to expand units higher
- Ability to mix rack with shelving
- Built-in capability for future expansion
- Plywood or other decking supplied by user: 5/8" thick

**Rack Accessories**

| Description  | Part No. |
|--|----------|
| Clamp for fastening units back-to-back;<br>2 needed per pair of frames | 10381    |
| Dart clip for locking down beams — 2 needed                            | 13037    |
| Plastic label holder fits V-Grip wire                                  | 6620     |

**Rack Ends**

| Depth | 5' High  | 6' High  | 7' High  | 8' High  | 10' High | 12' High | 15' High |
|-------|----------|----------|----------|----------|----------|----------|----------|
|       | Part No. | Part No. | Part No. | Part No. | Part No. | Part No. | Part No. |
| 15"   | 9304     | 9309     | 9314     | 9319     | 9329     | —        | 9345     |
| 24"   | 9301     | 9306     | 9311     | 9316     | 9326     | 9332     | 9342     |
| 30"   | 9305     | 9310     | 9315     | 9320     | 9330     | —        | 9346     |
| 36"   | 9302     | 9307     | 9312     | 9317     | 9327     | 9333     | 9343     |
| 48"   | 9303     | 9308     | 9313     | 9318     | 9328     | 9334     | 9344     |

**Rack Ends with nutserts for mounting to caster base**

| Depth | 5' High | 6' High |
|-------|---------|---------|
| 24"   | 9301TU  | 9306TU  |
| 30"   | —       | 9310TU  |
| 36"   | 9302TU  | 9307TU  |

Perimeter caster base (pg.16).

**Tie Bars for solid beams and Steel and Wire Decking**

| Depth | Part No. | Depth | Part No. |
|-------|----------|-------|----------|
| 15"   | 6521     | 24"   | 9420     |
| 24"   | 6522     | 30"   | 830815   |
| 30"   | 6525     | 36"   | 9421     |
| 36"   | 6523     | 48"   | 9422     |
| 48"   | 6524     |       |          |

Order 1 per pair of 4' or 5' beams; 2 per pair of 6' or 8' beams.



**Solid Decking Panels**

| Width | 15" Deep | 24" Deep | 30" Deep | 36" Deep | 48" Deep |
|-------|----------|----------|----------|----------|----------|
| 24"   | 16018    | 16002    | 16019    | 16003    | 16004    |
| 30"   | 16020    | 16022    | 16021    | 16023    | 16024    |



**Label Holder**

A neat and easy way to identify records or supplies.  
Part No. 6620.

**Splicer for Bulk rack**

Permits stacking V-Grip bulk rack units for multi-level space.

Part No. 5566



**Floor Anchors (one for each post)**

Fasten racks to floor for increased stability.  
(Must be used when bottom beam is more than 12" from floor.)  
7695 L&R (190317A for Seismic)



7695 L&R

190317A



Close the top of any V-Grip Bulk Rack upright. Easy to attach - simply tap its triangular base into the upright. May also be used as floor glide to protect all floors. Made of high-impact plastic, it will withstand any load within the capacity of the upright itself.

**Top/bottom cap**

| Description             | Part No. |
|-------------------------|----------|
| Top or Bottom Cap/White | 10177W   |
| Top or Bottom Cap/Black | 10177B   |

**Foot Plate**

Fits under uprights to protect linoleum or wood floors, or to act as shim on uneven floors.

Part No. 9826

**Flush Front and Corner Brackets**

Attach catwalks to racks.



7698 L&R

7700 L&R



A standard color chart is available at the beginning of each section with a more detailed one on page 126.



# V-Grip™ Tire Rack

V-Grip Tire Racks provide a flexible and economical tire storage system. Tire Racks are available in various heights in either a stationary or mobile configuration. Support beams provide a rigid 3-point connection to V-Grip upright post and are adjustable on 1 1/2" centers to accommodate a variety of tire sizes.

## Tire racks

- Racks assemble quickly and adjust with a minimum number of tools
- Beams adjust up or down on 1 1/2" centers
- Brackets furnished for back-to-back or against the wall use



Tire racks are adjustable for all passenger car sizes of tires and rims. If you require shelving to fit truck tires please contact Equipto.

### Racks hold 7 to 10 tires Each level 15"D x 60"W

All equipment assembles as shown, with cross beams locking into uprights. Beams are adjustable on 1 1/2" centers. All tire racks are furnished with brackets which may be used to anchor to wall or back-to-back. Floor anchors are provided for all starter units.

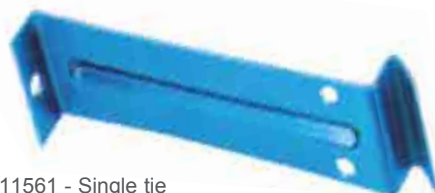
### Beam-to-Post Connection

Strong, V-Grip uprights with tapered slots accept 3 lugs on each beam end to lock post to beam firmly, without fasteners.



### Separator wall tie

This flange is to be used for bolting brackets back-to-back or for mounting to a wall (hardware for mounting to wall by others).



11561 - Single tie  
11562 - Set of two

4 Tier (120" H)



3 Tier (84" H)



806-52S Starter    806-52A Add-on    806-32S Starter    806-32A Add-on

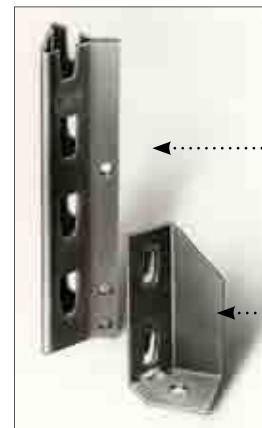
Includes wall tie and floor anchor



### Mobile Tire Rack

18"D x 60"W x 67"H  
2 tier with casters / Part No. 806-52MOB

### Floor anchor



Upright

Floor anchor  
R.H & L.H.

A standard color chart is available at the beginning of each section with a more detailed one on page 126.

# Zip-In Shelving

Equipto's Zip-In shelving is the ideal solution when there is frequent change in the size of items being stored and the ability to easily change the vertical clear opening of each shelf location is a prerequisite. Zip-In shelves simply slide in and out of the unit without unloading or removing adjacent shelves.

Shelving & Racks



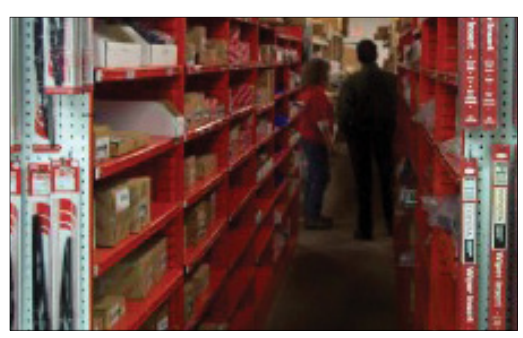
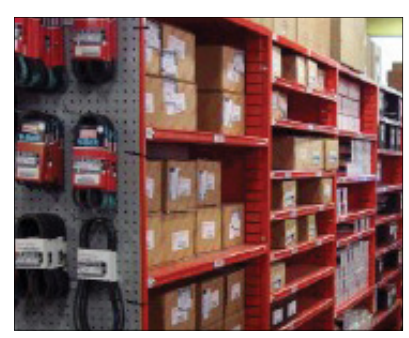
Zip-In shelving units provide adjustability of shelves on 1 1/2" centers.



Zip-In shelves adjust easily by sliding shelves in and out of the system.



Sliding dividers attach easily without hardware or fasteners and provide infinite adjustability left to right.



A standard color chart is available at the beginning of each section with a more detailed one on page 126.

**Zip-In preconfigured units**



Part No. 3020



Part No. 3022



Part No. 3010



Part No. 3012  
shown with 27 openings

**Zip-In units**

(All units are 84" high x 37<sup>1</sup>/<sub>8</sub>" wide x 12" deep)

| Part No. | Description                                    |
|----------|--|
| 3020     | With back: Shell only - order parts from list  |
| 3022     | With back; 9 openings, 9" high                 |
| 3010     | With back; 21 bins: 18 - 12" x 12"; 3-9" x 12" |
| 3012     | With back; up to 36 openings, 9" x 9"          |

**Zip-In components**

(All units are 84" high x 37<sup>1</sup>/<sub>8</sub>" wide x 12" deep)

| Part No. | Description  |
|----------|--|
| 6098     | Shelf 36" wide   |
| 6098L    | Shelf 36" wide, with label holder  |
| 10047    | Shelf front channel reinforcement  |
| 8145     | Divider 3" high for opening 4 <sup>1</sup> / <sub>2</sub> " or higher    |
| 8146     | Divider 4 <sup>1</sup> / <sub>2</sub> " high for opening 6" or higher    |
| 8147     | Divider 6" high for opening 9" or higher                                 |
| 8505     | Drawer 5 <sup>5</sup> / <sub>8</sub> " x 3 <sup>1</sup> / <sub>8</sub> " |
| 8720     | Drawer straight divider  |

\*6098(L) will carry 242 lb. evenly distributed load

**Supports to use when supporting deckover platforms over Zip-In Shelving**

| Part No. | Description                       |
|----------|-----------------------------------|
| 41327-01 | Vertical support 87" high painted |
| 41327-02 | Corner support 87" high painted   |
| 41327-03 | Vertical support 96" high painted |
| 41327-04 | Corner support 96" high painted   |



**Equipto Label Holder**

is a neat and easy way to identify records or supplies.

Part No. 6615



**Sliding divider**

Hooks into shelf holes and snap-locks into place on 1" centers without interfering with label holders.



**Shelf drawer**

6 across fills Zip-In Shelf. Order drawer divider separately. Part No. 8505

A standard color chart is available at the beginning of each section with a more detailed one on page 126.

# Iron Grip® Shelving

**The heavier the load the tighter the grip!**

Equipto Iron Grip® features the strongest, most resourceful system.

- Quick shelf placement without tools; just a simple, solid steel stud at every shelf corner.
- Independent unit concept is engineered for strength, and is infinitely adjustable for custom fitting to your specific needs.
- Iron Grip shelving provides superior strength for heavy applications
- Add drawers, dividers, bin fronts, bases or doors for your specific applications
- The largest upright anywhere, with a heavy gauge stud in each shelf corner which locks a double thickness of metal together
- Stud grip increases as additional weight is added to shelf

**Heights:** Iron Grip shelving units come in 84" height, 38<sup>5</sup>/<sub>8</sub>", 43<sup>1</sup>/<sub>8</sub>", 60", 72", 96", 120" and 180" high units are also available. Any other heights by special order.

Specify desired height; we'll provide a prompt quotation.

**PLEASE NOTE: This shelving is not interchangeable with V-Grip.**



Shelving & Racks

Superior Iron Grip strength automatically provides crucial 4-point reinforcement to shelves.

The tapered stud engages a sloped, key-shaped hole in the upright for instant binding strength.

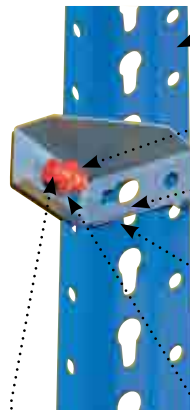
Built to last. Studs are plated; other parts have oven-baked enamel surfaces, and all formed from prime rolled steel.



Durable 18-gauge shelves feature box-formed edges on all four sides. Adding 13-gauge, U-formed channels (3/8" x 13/32") provides extra strength reinforcement on heavily loaded shelves. For heaviest use, also add end and center channels. Angles (1" x 1") made of 1/8" thick carbon steel provide optional reinforcement at the ends.

### High visibility panels

Equipto furnishes high visibility white back and end panels on Iron Grip shelving units, regardless of the color of other. Standard color on Iron Grip shelving is office gray with white panels. Optional decorator colors will also be shipped with white panels unless you specify otherwise.



Part No. 10392

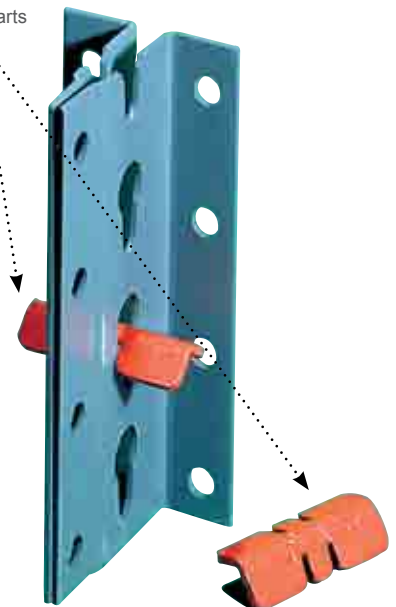
- 1" x 2<sup>3</sup>/<sub>8</sub>" uprights (13 gauge), are the largest anywhere. Side embossing adds even more strength and rigidity to the unit
- Iron Grip shelf studs allow adjustment of shelves instantly on 1<sup>1</sup>/<sub>2</sub>" centers
- Front and rear shelf flanges extend around the sides past keyhole. Steel stud binds both flanges to upright
- Dividers adjust on 1" centers with Speedy clips on 36" wide shelving (3" centers on 48" widths)

Shown in color for clarity, parts are actually zinc plated

### Iron grip key

Fasten any two shelving units together quickly and easily. Easy-access keys remove just as simply, allowing rearrangement of any unit without disturbing adjacent units  
U.S. patent No. 2,824,775

Use Iron Grip shelving in a variety of configurations: free-standing; side-by-side; back-to-back; or arranged in efficient work centers. Each shelf unit has four uprights.



Part No. 10394



- Reinforced shelf capacities up to 2000 lbs. per shelf
- Non-reinforced shelf capacities of 700 lbs. per 36" W shelf
- Remarkable Iron Grip strength
- Modular system allows quick adjustment of individual shelves as well as units
- Largest, sturdiest upright anywhere
- As the shelves are loaded, the unit strength increases
- Reflective white back and end panels are standard, regardless of shelf color

**Closed Shelving Units**

Note: Starter unit has 2 closed ends; additional unit has 1 closed end.

| Depth | Starting or Additional Unit | 6 Shelves Avg. 16 1/2" c.c. | 10 Shelves Avg. 9" c.c. | Extra Shelf |
|-------|-----------------------------|-----------------------------|-------------------------|-------------|
| 12"   | Starter                     | 70-6KD                      | 70-10KD                 | 6091        |
| 12"   | Add-on                      | 71-6KD                      | 71-10KD                 | 6091        |
| 18"   | Starter                     | 72-6KD                      | 72-10KD                 | 6150        |
| 18"   | Add-on                      | 73-6KD                      | 73-10KD                 | 6150        |
| 24"   | Starter                     | 74-6KD                      | 74-10KD                 | 6185        |
| 24"   | Add-on                      | 75-6KD                      | 75-10KD                 | 6185        |
| 36"   | Starter                     | 76-6KD                      | 76-10KD                 | 6260        |
| 36"   | Add-on                      | 77-6KD                      | 77-10KD                 | 6260        |

To order set-up (extra charge), change "KD" suffix to "SU".

**Open Shelving Units**

| Depth | 6 Shelves Avg. 16 1/2" c.c. | 10 Shelves Avg. 9" c.c. | Extra Shelf |
|-------|-----------------------------|-------------------------|-------------|
| 12"   | 60-6KD                      | 60-10KD                 | 6091        |
| 18"   | 62-6KD                      | 62-10KD                 | 6150        |
| 24"   | 64-6KD                      | 64-10KD                 | 6185        |
| 36"   | 66-6KD                      | 66-10KD                 | 6260        |

**Width:** All units in table are 3' wide. To order 4' widths (in any depth except 36"), substitute "W" for "-" in catalog number. Example: 60-6 is 3' wide; 60W6 is 4' wide.

**Height:** All units in table are 7' high. Units available in all additional heights listed in "Uprights" section on Page 33.

To order set-up (extra charge), change "KD" suffix to "SU".



Closed back and end



Open shelf

**Shelving & Racks**

A standard color chart is available at the beginning of each section with a more detailed one on page 126.

# Iron Grip® Shelving

Preconfigured units

- Units are supplied with white back and end panels
- Keep bulk and individual parts in the same unit for better inventory control
- Add lockable swinging doors for extra protection and security
- Quiet Ride™ Drawers feature 200 lbs. per drawer capacity
- Heavy duty 400 pound capacity drawer available
- All drawers extend 100%
- All preassembled units are 36" wide and 84" high
- Combine shelving and drawers in one unit



4203/4210



4204/4211



4205/4212



4206/4213



4207/4214



4208D

Shelving & Racks

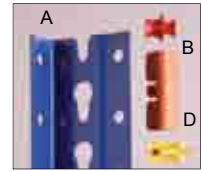
| Unit Description                                 | Part Numbers             |                         |                          |                         |
|--|--------------------------|-------------------------|--------------------------|-------------------------|
|  | 18" Deep<br>w/o Dividers | 18" Deep<br>w/ Dividers | 24" Deep<br>w/o Dividers | 24" Deep<br>w/ Dividers |
| 12 drawers 3" high, 4 shelf openings 12" high    | 4203N                    | 4203DN                  | 4210N                    | 4210DN                  |
| 8 drawers 4 1/2" high, 4 shelf openings 12" high | 4204N                    | 4204DN                  | 4211N                    | 4211DN                  |
| 6 drawers 6" high, 4 shelf openings 12" high     | 4205N                    | 4205DN                  | 4212N                    | 4212DN                  |
| 5 drawers 7 1/2" high, 4 shelf openings 12" high | 4206N                    | 4206DN                  | 4213N                    | 4213DN                  |
| 3 drawers 12" high, 4 shelf openings 12" high    | 4207N                    | 4207DN                  | 4214N                    | 4214DN                  |
| 2 drawers 3" high, 2 drawers 4 1/2" high         | 4208N                    | 4208DN                  | 4215N                    | 4215DN                  |
| 2 drawers 6" high, 1 drawer 7 1/2" high          |                          |                         |                          |                         |
| 3 shelf openings 15" high                        |                          |                         |                          |                         |

Doors for these units available on page 33. Note: Above units feature Quiet-Ride™ 200 pound capacity drawers. **To order 400 lb capacity Heavy-Duty drawers, substitute "H" for "N" in Part No.**

Handles are furnished the same color as the drawer and all units have reflective white back and side panels.

A standard color chart is available at the beginning of each section with a more detailed one on page 126.

**Components**



Drawers in a variety of widths and heights, with or without dividers, are available. (see drawer section.)

Iron Grip components: (A) Upright; (B) Shelf Stud; (D) Unit Key

Equipto's commitment to quality control and fast turnaround service assures reliable assistance to our customers in replacing, adapting or expanding Iron Grip shelving systems. Our complete line of dependable parts is your guide to achieving complete flexibility in your space utilization system.

**Back panels** (reflective white)

| Description   | Part No. |
|---|----------|
| 36" x 43 <sup>1</sup> / <sub>2</sub> " high                               | 7506     |
| 36" x 7 <sup>1</sup> / <sub>2</sub> " or less                             | 7506-2   |
| 36" x 7 <sup>3</sup> / <sub>8</sub> " to 10 <sup>1</sup> / <sub>2</sub> " | 7506-3   |
| 48" x 43 <sup>1</sup> / <sub>2</sub> " high                               | 7531     |
| 48" x 7 <sup>1</sup> / <sub>2</sub> " or less                             | 7531-2   |
| 48" x 7 <sup>1</sup> / <sub>2</sub> " to 10 <sup>1</sup> / <sub>2</sub> " | 7531-3   |

**Dividers** (standard color is smooth office gray)

| Description                                 | Part No. |
|---|----------|
| 2" x 12" deep                               | 8049     |
| 4 <sup>1</sup> / <sub>2</sub> " x 12" deep  | 8018     |
| 6" x 12" deep                               | 8019     |
| 7 <sup>1</sup> / <sub>2</sub> " x 12" deep  | 8020     |
| 9" x 12" deep                               | 8021     |
| 10 <sup>1</sup> / <sub>2</sub> " x 12" deep | 8022     |
| 12" x 12" deep                              | 8023     |
| 13 <sup>1</sup> / <sub>2</sub> " x 12" deep | 8024     |
| 15" x 12" deep                              | 8025     |
| 16 <sup>1</sup> / <sub>2</sub> " x 12" deep | 8026     |
| 4 <sup>1</sup> / <sub>2</sub> " x 18" deep  | 8090     |
| 6" x 18" deep                               | 8094     |
| 7 <sup>1</sup> / <sub>2</sub> " x 18" deep  | 8095     |
| 9" x 18" deep                               | 8096     |
| 10 <sup>1</sup> / <sub>2</sub> " x 18" deep | 8097     |
| 12" x 18" deep                              | 8098     |
| 13 <sup>1</sup> / <sub>2</sub> " x 18" deep | 8099     |
| 16 <sup>1</sup> / <sub>2</sub> " x 18" deep | 8091     |
| 18" x 18" deep                              | 8092     |
| 6" x 24" deep                               | 8119     |
| 7 <sup>1</sup> / <sub>2</sub> " x 24" deep  | 8120     |
| 18" x 18" deep                              | 8092     |
| 9" x 24" deep                               | 8121     |
| 10 <sup>1</sup> / <sub>2</sub> " x 24" deep | 8122     |
| 12" x 24" deep                              | 8123     |
| 13 <sup>1</sup> / <sub>2</sub> " x 24" deep | 8124     |
| 15" x 24" deep                              | 8125     |
| 16 <sup>1</sup> / <sub>2</sub> " x 24" deep | 8126     |
| 10 <sup>1</sup> / <sub>2</sub> " x 36" deep | 8133     |
| 12" x 36" deep                              | 8134     |

**Miscellaneous parts and hardware**

| Description              | Part No. |
|--------------------------|----------|
| Shelf stud               | 10392    |
| Unit key                 | 10394    |
| Speedy clip              | 10226    |
| Bolt & nut 3/16" x 3/8"  | 13000    |
| Bolt & nut 3/16" x 1/4"  | 13001    |
| Bolt & nut 1/4" x 1/2"   | 13002    |
| Bolt & nut 1/4" x 1"     | 13003    |
| Headed rod 3/16" x 85"   | 9720     |
| Panel clip               | 10332    |
| Corner brace             | 6420     |
| Wide drawer filler strip | 7702     |
| Aisle safety rail 36"    | 10043G   |
| Aisle safety rail 48"    | 10044G   |
| Front seismic anchor     | 190330A  |
| Common back anchor       | 190335A  |

**Sway braces (pair)**

| Description                                    | Part No. |
|--|----------|
| 36" Back, 50 <sup>1</sup> / <sub>8</sub> " CC  | 6499     |
| 48" Back, 67 <sup>3</sup> / <sub>16</sub> " CC | 6431     |
| 12" End, 13 <sup>5</sup> / <sub>32</sub> " CC  | 6480     |
| 18" End, 25 <sup>3</sup> / <sub>16</sub> " CC  | 6481     |
| 24" End, 33 <sup>9</sup> / <sub>16</sub> " CC  | 6482     |
| 36" End, 48 <sup>1</sup> / <sub>8</sub> " CC   | 6483     |
| Upright to shelf corner, user must drill shelf | 6495     |

**End panels** (reflective white)

| Description   | Part No. |
|---|----------|
| 12" x 43 <sup>1</sup> / <sub>2</sub> " high                               | 7982     |
| 12" x 7 <sup>1</sup> / <sub>2</sub> " or less                             | 7982-2   |
| 12" x 7 <sup>3</sup> / <sub>8</sub> " to 10 <sup>1</sup> / <sub>2</sub> " | 7982-3   |
| 18" x 43 <sup>1</sup> / <sub>2</sub> " high                               | 7983     |
| 18" x 7 <sup>1</sup> / <sub>2</sub> " or less                             | 7983-2   |
| 18" x 7 <sup>3</sup> / <sub>8</sub> " to 10 <sup>1</sup> / <sub>2</sub> " | 7983-3   |
| 24" x 43 <sup>1</sup> / <sub>2</sub> " high                               | 7984     |
| 24" x 7 <sup>1</sup> / <sub>2</sub> " or less                             | 7984-2   |
| 24" x 7 <sup>3</sup> / <sub>8</sub> " to 10 <sup>1</sup> / <sub>2</sub> " | 7984-3   |
| 36" x 43 <sup>1</sup> / <sub>2</sub> " high                               | 7991     |
| 36" x 7 <sup>1</sup> / <sub>2</sub> " or less                             | 7991-2   |
| 36" x 7 <sup>3</sup> / <sub>8</sub> " to 10 <sup>1</sup> / <sub>2</sub> " | 7991-3   |

**Bases**

| Description                                  | Part No. |
|--|----------|
| Front, 1 <sup>1</sup> / <sub>2</sub> " x 36" | 6923     |
| Front, 3" x 36"                              | 6924     |
| Front, 3" x 48"                              | 6930     |

**Doors for shelving**

| Description                                   | Part No. |
|---|----------|
| 36" wide x 7" H                               | 18035    |
| 36" wide x 42" H                              | 18043    |
| 36" wide x 34 <sup>1</sup> / <sub>2</sub> " H | 18036    |

Swinging doors in free height attach quickly and securely.

**Drawers**

Modular drawers on page 14 available for Iron-Grip Shelving. Add "I" before N or H. Example: 8603IN.

**Uprights**

| Description                                 | Part No. |
|---|----------|
| 38 <sup>5</sup> / <sub>8</sub> " Left hand  | 5598L    |
| 38 <sup>5</sup> / <sub>8</sub> " Right hand | 5599R    |
| 43 <sup>1</sup> / <sub>2</sub> " Left hand  | 5596L    |
| 43 <sup>1</sup> / <sub>2</sub> " Right hand | 5597R    |
| 5' Left hand                                | 5582L    |
| 5' Right hand                               | 5583R    |
| 6' Left hand                                | 5586L    |
| 6' Right hand                               | 5587R    |
| 7' Left hand                                | 5588L    |
| 7' Right hand                               | 5589R    |
| 8' Left hand                                | 5590L    |
| 8' Right hand                               | 5591R    |
| 10' Left hand                               | 5594L    |
| 10' Right hand                              | 5595R    |
| 15' Left hand                               | 5572L    |
| 15' Right hand                              | 5573R    |
| Splicer 8" long                             | 5580     |

**Bin fronts & labelholders**

| Description                                       | Part No. |
|---|----------|
| 35 <sup>3</sup> / <sub>4</sub> " x 1" Bin front   | 10506    |
| 35" x 3 <sup>1</sup> / <sub>4</sub> " Bin front   | 10507    |
| 34" x 1 <sup>1</sup> / <sub>8</sub> " Labelholder | 6615     |
| 46" x 1 <sup>1</sup> / <sub>8</sub> " Labelholder | 6613     |

**Reinforcing channels & angles**

| Description               | Part No. |
|---------------------------|----------|
| End angle for 12" deep    | 9630     |
| End angle for 18" deep    | 9631     |
| End angle for 24" deep    | 9632     |
| End angle for 36" deep    | 9633     |
| 36" Front or rear channel | 10029    |
| 48" Front or rear angle   | 9636     |
| 36" Center channel        | 9629     |
| 48" Center channel        | 9637     |

**Shelves (with studs)**

| Description | Part No. |
|-------------|----------|
| 12" x 36"   | 6091     |
| 18" x 36"   | 6150     |
| 24" x 36"   | 6185     |
| 36" x 36"   | 6260     |
| 12" x 48"   | 6111     |
| 18" x 48"   | 6165     |
| 24" x 48"   | 6198     |

A standard color chart is available at the beginning of each section with a more detailed one on page 126.

# Economy Shelving

Equipto Economy Shelving is available in either open or closed styles and is ideal for cost-effective storage of packaged goods or bulky items. Economy Shelving is not interchangeable with V-Grip. 20-gauge shelves are supported by adjustable compression clips, have multiple edge bends for strength and can support up to 450 lbs. of evenly distributed load. Shelves can be height-adjusted in 1" increments.

Pre-engineered 5 shelf starter units are available with shelves in 36" and 48" widths and 12", 15", 18" and 24" depths.

Unit heights are 75" and 87". 5-shelf starter units can be expanded with any number of 5-shelf add-on kits, now or in the future.

## Closed shelving - pre-engineered units

| Starter P/N | Width | Depth | Height | Weight   | Adder P/N  | Width | Depth | Height | Weight   |
|-------------|-------|-------|--------|----------|------------|-------|-------|--------|----------|
| EEC361275S  | 36"   | 12"   | 75"    | 88 lbs.  | EEC361275A | 36"   | 12"   | 75"    | 81 lbs.  |
| EEC481275S  | 48"   | 12"   | 75"    | 108 lbs. | EEC481275A | 48"   | 12"   | 75"    | 100 lbs. |
| EEC361575S  | 36"   | 15"   | 75"    | 98 lbs.  | EEC361575A | 36"   | 15"   | 75"    | 89 lbs.  |
| EEC481575S  | 48"   | 15"   | 75"    | 119 lbs. | EEC481575A | 48"   | 15"   | 75"    | 110 lbs. |
| EEC361875S  | 36"   | 18"   | 75"    | 109 lbs. | EEC361875A | 36"   | 18"   | 75"    | 97 lbs.  |
| EEC481875S  | 48"   | 18"   | 75"    | 131 lbs. | EEC481875A | 48"   | 18"   | 75"    | 120 lbs. |
| EEC362475S  | 36"   | 24"   | 75"    | 131 lbs. | EEC362475A | 36"   | 24"   | 75"    | 115 lbs. |
| EEC482475S  | 48"   | 24"   | 75"    | 159 lbs. | EEC482475A | 48"   | 24"   | 75"    | 142 lbs. |
| EEC361287S  | 36"   | 12"   | 87"    | 96 lbs.  | EEC361287A | 36"   | 12"   | 87"    | 88 lbs.  |
| EEC481287S  | 48"   | 12"   | 87"    | 117 lbs. | EEC481287A | 48"   | 12"   | 87"    | 108 lbs. |
| EEC361587S  | 36"   | 15"   | 87"    | 107 lbs. | EEC361587A | 36"   | 15"   | 87"    | 96 lbs.  |
| EEC481587S  | 48"   | 15"   | 87"    | 129 lbs. | EEC481587A | 48"   | 15"   | 87"    | 118 lbs. |
| EEC361887S  | 36"   | 18"   | 87"    | 118 lbs. | EEC361887A | 36"   | 18"   | 87"    | 104 lbs. |
| EEC481887S  | 48"   | 18"   | 87"    | 142 lbs. | EEC481887A | 48"   | 18"   | 87"    | 128 lbs. |
| EEC362487S  | 36"   | 24"   | 87"    | 132 lbs. | EEC362487A | 36"   | 24"   | 87"    | 123 lbs. |
| EEC482487S  | 48"   | 24"   | 87"    | 171 lbs. | EEC482487A | 48"   | 24"   | 87"    | 152 lbs. |



## Open shelving - pre-engineered units

| Starter P/N | Width | Depth | Height | Weight   | Adder P/N  | Width | Depth | Height | Weight  |
|-------------|-------|-------|--------|----------|------------|-------|-------|--------|---------|
| EEO361275S  | 36"   | 12"   | 75"    | 52 lbs.  | EEO361275A | 36"   | 12"   | 75"    | 51 lbs. |
| EEO481275S  | 48"   | 12"   | 75"    | 63 lbs.  | EEO481275A | 48"   | 12"   | 75"    | 62 lbs. |
| EEO361575S  | 36"   | 15"   | 75"    | 58 lbs.  | EEO361575A | 36"   | 15"   | 75"    | 57 lbs. |
| EEO481575S  | 48"   | 15"   | 75"    | 71 lbs.  | EEO481575A | 48"   | 15"   | 75"    | 70 lbs. |
| EEO361875S  | 36"   | 18"   | 75"    | 65 lbs.  | EEO361875A | 36"   | 18"   | 75"    | 63 lbs. |
| EEO481875S  | 48"   | 18"   | 75"    | 79 lbs.  | EEO481875A | 48"   | 18"   | 75"    | 77 lbs. |
| EEO362475S  | 36"   | 24"   | 75"    | 79 lbs.  | EEO362475A | 36"   | 24"   | 75"    | 77 lbs. |
| EEO482475S  | 48"   | 24"   | 75"    | 98 lbs.  | EEO482475A | 48"   | 24"   | 75"    | 96 lbs. |
| EEO361287S  | 36"   | 12"   | 87"    | 54 lbs.  | EEO361287A | 36"   | 12"   | 87"    | 53 lbs. |
| EEO481287S  | 48"   | 12"   | 87"    | 65 lbs.  | EEO481287A | 48"   | 12"   | 87"    | 64 lbs. |
| EEO361587S  | 36"   | 15"   | 87"    | 60 lbs.  | EEO361587A | 36"   | 15"   | 87"    | 59 lbs. |
| EEO481587S  | 48"   | 15"   | 87"    | 73 lbs.  | EEO481587A | 48"   | 15"   | 87"    | 72 lbs. |
| EEO361887S  | 36"   | 18"   | 87"    | 67 lbs.  | EEO361887A | 36"   | 18"   | 87"    | 65 lbs. |
| EEO481887S  | 48"   | 18"   | 87"    | 81 lbs.  | EEO481887A | 48"   | 18"   | 87"    | 79 lbs. |
| EEO362487S  | 36"   | 24"   | 87"    | 80 lbs.  | EEO362487A | 36"   | 24"   | 87"    | 79 lbs. |
| EEO482487S  | 48"   | 24"   | 87"    | 100 lbs. | EEO482487A | 48"   | 24"   | 87"    | 98 lbs. |

### 36" Extra shelves - compression clip included

| Part No. | Width | Depth | Height | Weight  | Capacity |
|----------|-------|-------|--------|---------|----------|
| 422-9020 | 36"   | 12"   | 1 1/4" | 6 lbs.  | 450 lbs. |
| 422-9040 | 36"   | 15"   | 1 1/4" | 7 lbs.  | 450 lbs. |
| 422-9070 | 36"   | 18"   | 1 1/4" | 9 lbs.  | 450 lbs. |
| 422-9090 | 36"   | 24"   | 1 1/4" | 12 lbs. | 450 lbs. |

Additional clips need 4 per shelf

490-2000 Compression clip

### 48" Extra shelves - compression clip included

| Part No. | Width | Depth | Height | Weight  | Capacity |
|----------|-------|-------|--------|---------|----------|
| 422-9030 | 48"   | 12"   | 1 1/4" | 8 lbs.  | 200 lbs. |
| 422-9050 | 48"   | 15"   | 1 1/4" | 10 lbs. | 200 lbs. |
| 422-9080 | 48"   | 18"   | 1 1/4" | 11 lbs. | 200 lbs. |
| 422-9110 | 48"   | 24"   | 1 1/4" | 15 lbs. | 200 lbs. |

Additional clips need 4 per shelf

490-2000 Compression clip

A standard color chart is available at the beginning of each section with a more detailed one on page 126.



# Boltless Storage Rack

Equipto Boltless Storage Rack is the economical alternative to standard steel shelving. Designed for hand loading and unloading only, it is ideal for automotive supplies, parts, warehouse materials, paint, batteries and just about anything else you need to store.

## Preconfigured shelving units:

Frames only - wood or particle board shelves not included

| Part No.    | Description                     | Weight  |
|-------------|---------------------------------|---------|
| RSR-693284  | 4 Shelves - 32"D X 69"W X 84"H  | 94 lbs  |
| RSR-6932120 | 5 Shelves - 32"D X 69"W X 120"H | 122 lbs |
| RSR-6932144 | 6 Shelves - 32"D X 69"W X 144"H | 146 lbs |

## Equipto offers three pre-configured shelf kit sizes:

- 4 Shelves 32"D x 69"W x 84"H
- 5 Shelves 32"D x 69"W x 120"H
- 6 Shelves 32"D x 69"W x 144"H

You can also design your own units from components as shown on the reverse side of this New Product News.



## Design your own boltless storage rack shelving units with components

### Upright angle - 1 11/16" x 2 1/4" 14 gauge

| Part No.   | Weight |
|------------|--------|
| RSR-UR-72  | 5.20   |
| RSR-UR-84  | 6.10   |
| RSR-UR-96  | 7.00   |
| RSR-UR-120 | 8.70   |
| RSR-UR-144 | 10.40  |



### Front to back

|           |      |
|-----------|------|
| RSR-FB-12 | 0.70 |
| RSR-FB-18 | 1.20 |
| RSR-FB-24 | 1.60 |
| RSR-FB-30 | 2.00 |
| RSR-FB-32 | 2.20 |
| RSR-FB-36 | 2.50 |
| RSR-FB-48 | 3.40 |
| RSR-LR-48 | 3.60 |
| RSR-LR-69 | 5.10 |
| RSR-LR-72 | 5.40 |
| RSR-LR-96 | 8.40 |



### Left to right angle beams

|           |      |
|-----------|------|
| RSR-LR-48 | 3.60 |
| RSR-LR-69 | 5.10 |
| RSR-LR-72 | 5.40 |
| RSR-LR-96 | 8.40 |



### Left to right channel beam

|            |       |
|------------|-------|
| BSR-CLR-72 | 7.70  |
| BSR-CLR-96 | 10.40 |



### Shelf tie support

|            |      |
|------------|------|
| BSR-STs-24 | 2.10 |
| BSR-STs-30 | 2.60 |
| BSR-STs-32 | 2.70 |
| BSR-STs-36 | 3.00 |
| BSR-STs-48 | 4.00 |



### Tie plate

|        |      |
|--------|------|
| BSR-TP | 0.20 |
|--------|------|



### Particle board shelves

| Part No.   | Description (D x W) | Weight     |
|------------|---------------------|------------|
| BSRPB-1236 | 12" x 36"           | 7.27 lbs.  |
| BSRPB-1248 | 12" x 48"           | 9.69 lbs.  |
| BSRPB-1269 | 12" x 69"           | 13.94 lbs. |
| BSRPB-1272 | 12" x 72"           | 14.54 lbs. |
| BSRPB-1296 | 12" x 96"           | 19.39 lbs. |
| BSRPB-1836 | 18" x 36"           | 10.91 lbs. |
| BSRPB-1848 | 18" x 48"           | 14.54 lbs. |
| BSRPB-1869 | 18" x 69"           | 20.90 lbs. |
| BSRPB-1872 | 18" x 72"           | 21.81 lbs. |
| BSRPB-1896 | 18" x 96"           | 29.08 lbs. |
| BSRPB-2436 | 24" x 36"           | 14.54 lbs. |
| BSRPB-2448 | 24" x 48"           | 19.39 lbs. |
| BSRPB-2469 | 24" x 69"           | 27.87 lbs. |
| BSRPB-2472 | 24" x 72"           | 29.08 lbs. |
| BSRPB-2496 | 24" x 96"           | 38.78 lbs. |
| BSRPB-3036 | 30" x 36"           | 18.18 lbs. |
| BSRPB-3048 | 30" x 48"           | 23.00 lbs. |
| BSRPB-3069 | 30" x 69"           | 34.87 lbs. |
| BSRPB-3072 | 30" x 72"           | 36.36 lbs. |
| BSRPB-3096 | 30" x 96"           | 48.48 lbs. |
| BSRPB-3236 | 32" x 36"           | 19.39 lbs. |
| BSRPB-3248 | 32" x 48"           | 25.85 lbs. |
| BSRPB-3269 | 32" x 69"           | 37.16 lbs. |
| BSRPB-3272 | 32" x 72"           | 38.78 lbs. |
| BSRPB-3296 | 32" x 96"           | 51.71 lbs. |
| BSRPB-3636 | 36" x 36"           | 20.00 lbs. |
| BSRPB-3648 | 36" x 48"           | 29.08 lbs. |
| BSRPB-3669 | 36" x 69"           | 41.81 lbs. |
| BSRPB-3672 | 36" x 72"           | 43.63 lbs. |
| BSRPB-3696 | 36" x 96"           | 58.17 lbs. |
| BSRPB-4848 | 48" x 48"           | 40.00 lbs. |
| BSRPB-4869 | 48" x 69"           | 55.75 lbs. |
| BSRPB-4872 | 48" x 72"           | 58.17 lbs. |
| BSRPB-4896 | 48" x 96"           | 77.56 lbs. |

Specific to only Boltless Storage Rack shelving.  
These do not fit other Equipto shelving with particle board shelves.

A standard color chart is available at the beginning of each section with a more detailed one on page 126.

# Bar Racks

Equipto Bar Racks are ideal for storing long and bulky parts as well as pipes. Each arm carries 325 lbs. Choose 3', 6' or 8' widths, to support parts as needed.

- Specialty bar racks
- Single or double face
- Two heights, three widths, two depths
- Use individually or in rows
- Shelves optionally available.
- Capacity 650 lbs. per level

Bar Racks are the effective answer to organizing steel — or any other items that don't need shelf support. Slotted angle, pipe, tubes, bars — Equipto Bar Racks hold them all. With no wasted space and absolutely simple access. Note: Be sure to order a rack end to finish each row. †



Shelves (12" x 36") fit between rack arms to hold long and short products in same unit.



Single-faced rack with end can be used free-standing to hold slotted angle, pipe, bars, etc.



**Shelving & Racks**

Why try to maneuver those special items in and out of shelving, when they don't need to be there in the first place? Solid steel Equipto Bar Racks are specially designed for just those items. Single or double-face bar racks in a range of heights and widths can be used individually or in rows. You can even add a shelf here and there for items too short to reach between rack arms.

### Accessories

| Description                                | Part No. |
|--|----------|
| Extra Arm, 12" deep; capacity 325 lbs.     | 1070     |
| 12" x 36" Extra shelf for bottom arms only | 6052     |
| 12" x 36" Extra shelf for other arms       | 6053     |

**Bar Racks** - a complete rack includes one or more units and a rack end. (†)

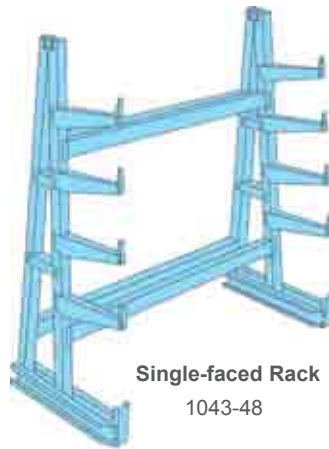
| Description           | Height | Width                           | Depth                            | Part No |
|-----------------------|--------|---------------------------------|----------------------------------|---------|
| Double-face unit      | 7'     | 3'                              | 34"                              | 1060    |
| Double-face unit      | 7'     | 6'                              | 34"                              | 1060-72 |
| Double-face unit      | 7'     | 8'                              | 34"                              | 1060-96 |
| †Double-face rack end | 7'     | 2 <sup>3</sup> / <sub>8</sub> " | 34"                              | 1061    |
| Single-face unit      | 7'     | 3'                              | 22 <sup>1</sup> / <sub>8</sub> " | 1062    |
| Single-face unit      | 7'     | 6'                              | 22 <sup>1</sup> / <sub>8</sub> " | 1062-72 |
| Single-face unit      | 7'     | 8'                              | 22 <sup>1</sup> / <sub>8</sub> " | 1062-96 |
| †Single-face rack end | 7'     | 2 <sup>3</sup> / <sub>8</sub> " | 22 <sup>1</sup> / <sub>8</sub> " | 1063    |
| Double-face unit      | 4'     | 3'                              | 34"                              | 1064    |
| Double-face unit      | 4'     | 6'                              | 34"                              | 1064-72 |
| Double-face unit      | 4'     | 8'                              | 34"                              | 1064-96 |
| †Double-face rack end | 4'     | 2 <sup>3</sup> / <sub>8</sub> " | 34"                              | 1065    |
| Single-face unit      | 4'     | 3'                              | 22 <sup>1</sup> / <sub>8</sub> " | 1066    |
| Single-face unit      | 4'     | 6'                              | 22 <sup>1</sup> / <sub>8</sub> " | 1066-72 |
| Single-face unit      | 4'     | 8'                              | 22 <sup>1</sup> / <sub>8</sub> " | 1066-96 |
| †Single-face rack end | 4'     | 2 <sup>3</sup> / <sub>8</sub> " | 22 <sup>1</sup> / <sub>8</sub> " | 1067    |

A standard color chart is available at the beginning of each section with a more detailed one on page 126.

# Heavy Duty Bar Racks

The innovative, space-saving answer to organization of a wide range of long items, with a capacity of up to 12,000 lbs. per unit! Choose single or double-faced designs in 18 different sizes for your best application. Available in three widths, three heights and two arm lengths - all adjustable, and designed for economical, common upright performance.

- Ideal for long, difficult-to-organize items
- Organizes and protects valuable bar stock, pipe, lumber, conduit, steel angle, tool steel and more
- High capacity and high strength
- Adjustable on 2" centers
- 18" arm holds 1,000 lbs, 30" arm holds 500 lbs.,
- each frame up to 12,000 lbs.



Single-faced Rack  
1043-48



Note: 8' high units have 5 levels; 10' and 12' high units have 6 and 7 levels respectively.

For additional arms, order:

- Extra 18" arm: 1046-18
- Extra 30" arm: 1056-30

A complete rack includes one or more units and a rack end.

## Heavy Duty Bar Racks

### Single-faced 18" Arms (Unit Depth 36")

| Unit Height | Width of Unit Bays |         |         | Rack End |
|-------------|--------------------|---------|---------|----------|
|             | 48"                | 72"     | 99"     |          |
| 8'-0"       | 1043-48            | 1043-72 | 1043-99 | 1043     |
| 10'-0"      | 1044-48            | 1044-72 | 1044-99 | 1044     |
| 12'-0"      | 1045-48            | 1045-72 | 1045-99 | 1045     |

### Double-faced 18" Arms (Unit Depth 54")

| Unit Height | Width of Unit Bays |         |         | Rack End |
|-------------|--------------------|---------|---------|----------|
|             | 48"                | 72"     | 99"     |          |
| 8'-0"       | 1040-48            | 1040-72 | 1040-99 | 1040     |
| 10'-0"      | 1041-48            | 1041-72 | 1041-99 | 1041     |
| 12'-0"      | 1042-48            | 1042-72 | 1042-99 | 1042     |

### Single-faced 30" Arms (Unit Depth 48")

| Unit Height | Width of Unit Bays |         |         | Rack End |
|-------------|--------------------|---------|---------|----------|
|             | 48"                | 72"     | 99"     |          |
| 8'-0"       | 1053-48            | 1053-72 | 1053-99 | 1053     |
| 10'-0"      | 1054-48            | 1054-72 | 1054-99 | 1054     |
| 12'-0"      | 1055-48            | 1055-72 | 1055-99 | 1055     |

### Double-faced 30" Arms (Unit Depth 78")

| Unit Height | Width of Unit Bays |         |         | Rack End |
|-------------|--------------------|---------|---------|----------|
|             | 48"                | 72"     | 99"     |          |
| 8'-0"       | 1050-48            | 1050-72 | 1050-99 | 1050     |
| 10'-0"      | 1051-48            | 1051-72 | 1051-99 | 1051     |
| 12'-0"      | 1052-48            | 1052-72 | 1052-99 | 1052     |

Note: Be sure to order a rack end to finish each row.

Note: Limit 6 arms per upright. Capacity: 18" arm-1,000 lbs. each; 30" arm-500 lbs. each.



Hand loading and retrieval is fast with easy access from either side of rack.



Power trucks can load heavier items on rack with access from either side.

# Reel Racks

Organize reels of cable and supplies, making them easy to retrieve. Equipto Reel Racks hold up to 2000 lbs. per level, and up to 12000 lbs. per rack. (Reel Rods not included.)

**Racks hold small to large reels on both sides — safely. And you can move them easily by hand or fork lift truck.**

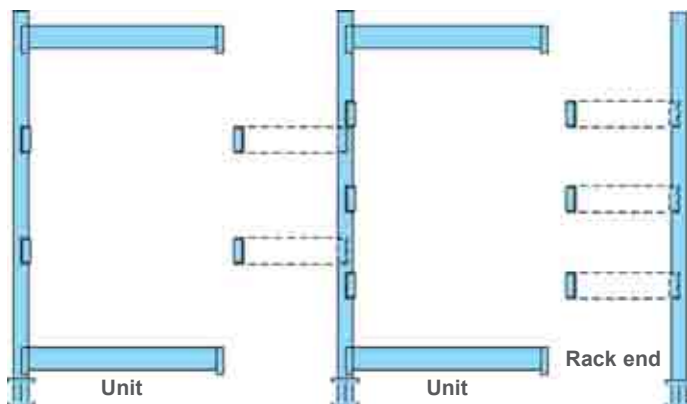
- High capacity free standing A-frame racks
- 96"-120"-144" heights
- Rack is 26" deep at the base
- 12000 lb. capacity
- 3" x 3" vertical posts with mounting holes
- Adjustable cross beams on 2" centers with automatic safety locks
- Rack end required for each row of units



1072R04



1076E08  
rack ends



Each unit supplied with right-hand reel holders (as specified) that fasten to next unit or rack end.

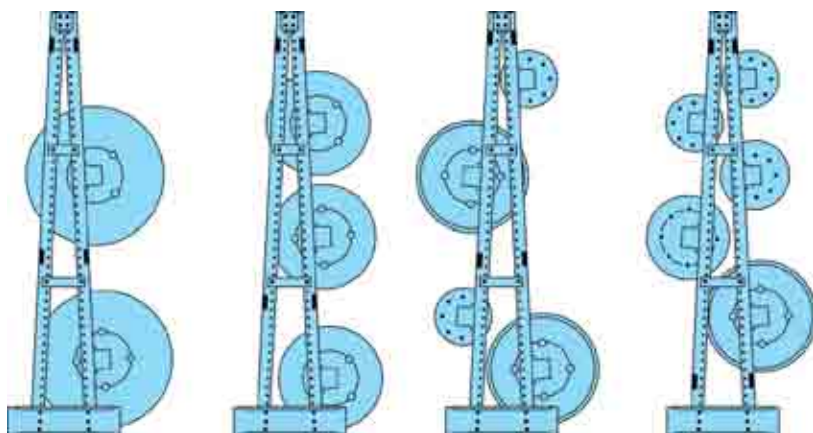
|                             | Width   |         | Height  |            | No. of Reel Holders |
|-----------------------------|---------|---------|---------|------------|---------------------|
|                             | 96"     | 120"    | 144"    |            |                     |
| 48"                         | 1072R04 | 1072R14 | 1072R24 | Two pair   |                     |
| 72"                         | 1072R06 | 1072R16 | 1072R26 | Two pair   |                     |
| 48"                         | 1073R04 | 1073R14 | 1073R24 | Three pair |                     |
| 72"                         | 1073R06 | 1073R16 | 1073R26 | Three pair |                     |
| 48"                         | 1074R04 | 1074R14 | 1074R24 | Four pair  |                     |
| 72"                         | 1074R06 | 1074R16 | 1074R26 | Four pair  |                     |
| 48"                         | 1075R04 | 1075R14 | 1075R24 | Five pair  |                     |
| 72"                         | 1075R06 | 1075R16 | 1075R26 | Five pair  |                     |
| 1076E08 Rack End, 96" high  |         |         |         |            |                     |
| 1076E10 Rack End, 120" high |         |         |         |            |                     |
| 1076E12 Rack End, 144" high |         |         |         |            |                     |



### Extra reel holders

- Pairs only.
- Reel holders accommodate axles up to 2<sup>3/8</sup>" O.D.

| Shaft Size                 | Capacity  | Part No. (pr.) |
|----------------------------|-----------|----------------|
| To 2 <sup>3/8</sup> " O.D. | 2000 lbs. | 78218RH        |



Rack with two pr. reel holders

Rack with three pr. reel holders

Rack with four pr. reel holders

Rack with five pr. reel holders



Pipe not included. Secure standard schedule 40 pipe (up to 2" nominal) from your local plumbing supply. Use 47" pipe length for 48" wide rack; 71" pipe for 72" wide rack. Reel holders are adjustable on 2" increments to hold multiple reels.

A standard color chart is available at the beginning of each section with a more detailed one on page 126.

# Specialty Racks

Equipto provides storage for all types of parts. Keep grinding wheels, spools, and even auto body parts on these unique, heavy-duty racks.

## Disc rack

- V-Formed shelves with divider rods
- 6 shelves adjust 1<sup>1/2</sup>" centers
- Divider rods are on 1" centers
- Ideal for grinding wheels and numerous disc shaped objects
- All items are easily accessible
- Size of unit is 84" high, 36" wide and 8<sup>1/4</sup>" deep
- Up to 4 levels high

### Description: Disc Rack

Part No. 879-7



## Trim & molding rack

- Keep trim and molding horizontally
- 48 compartments
- Keep valuable trim and molding pieces organized and out of harm's way.

### Description: Trim & Molding Rack

Size : 48"D x 36"W x 84"H

Part No: 878-9



## Wire spool rack

- 7-shelf reel rack adjustable on 1<sup>1/2</sup>" centers
- Organize and retrieve wire, cable, chain, hose, rope or tubing
- Holds reels up to 16" in diameter
- V-shaped shelves with center rod
- Fiberboard on shelves to deaden noise and prevent excessive uncoiling
- Spool rods are included

### Description: Wire Spool Rack

Size: 8"D x 36"W x 84"H

Part No. 880-7

