

# HANDRAIL ASSEMBLY INSTRUCTIONS

**EQUIPTO**  
AURORA, ILLINOIS 60507

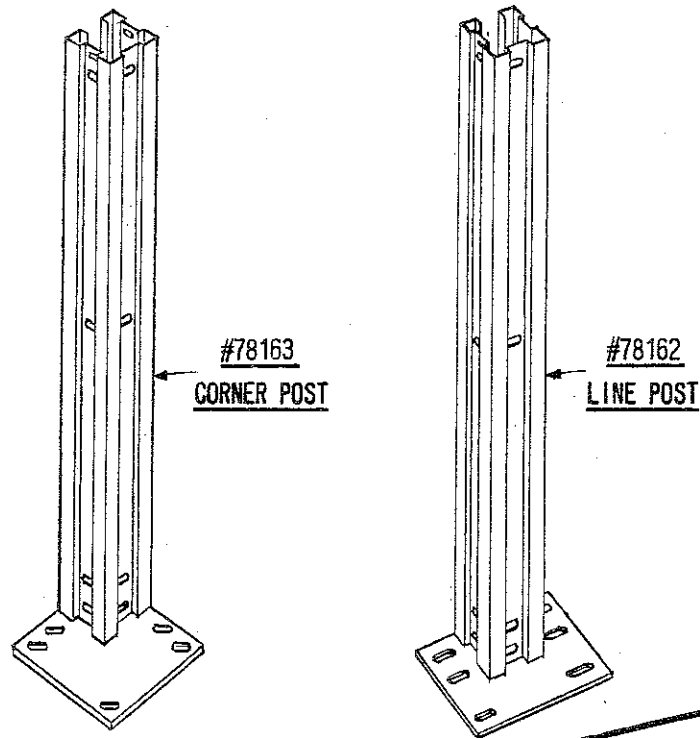
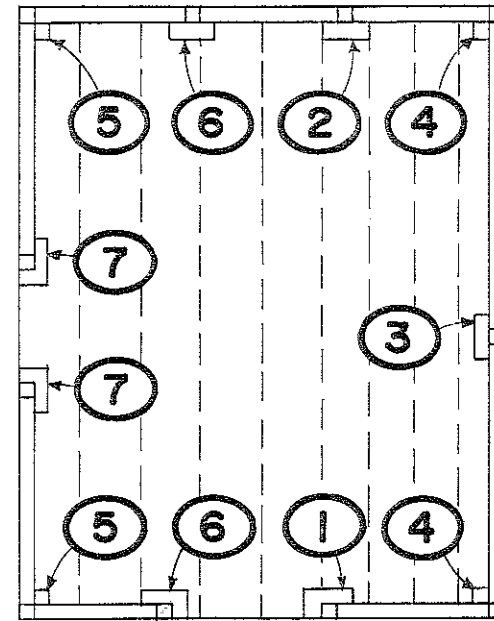
## MOUNTING POSTS ON EQUIPTO GRATING

HARDWARE: 3/8" X 1-1/2" HEX HEAD BOLTS, FLAT WASHER, LOCKWASHER, AND NUT. (Four each per post)

### PROCEDURE FOR ANCHORING POSTS

1. LAY OUT THE HANDRAILS ALONG EDGE OF MEZZANINE TO DETERMINE EXACTLY WHERE THE POST MUST GO.
2. AT END OF GRATING PANELS, SLIDE SUPPORT PLATES INTO END OF THE PANELS AND BOLT POST IN PLACE.
3. ALONG THE FLANGE SIDE OF THE PANEL, POSITION THE CHANNEL SUPPORTS UNDER THE GRATING PANELS AND BOLT THE POST IN PLACE.

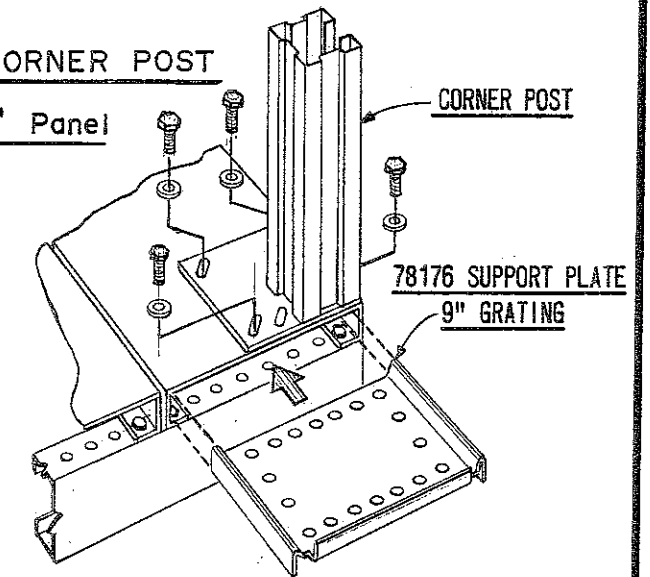
### LOCATION OF RAILING POSTS



④

### 80004 CORNER POST

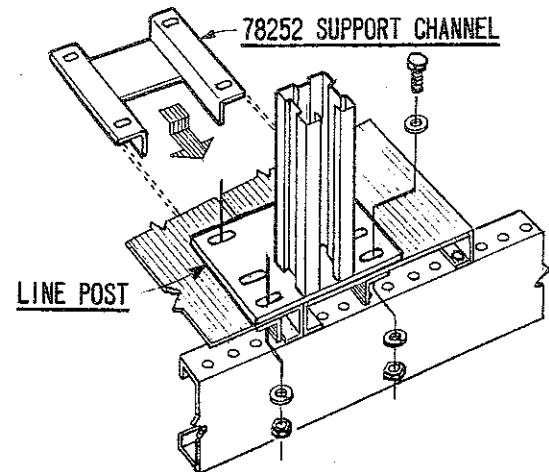
on 9" Panel



①

### 80001 LINE POST

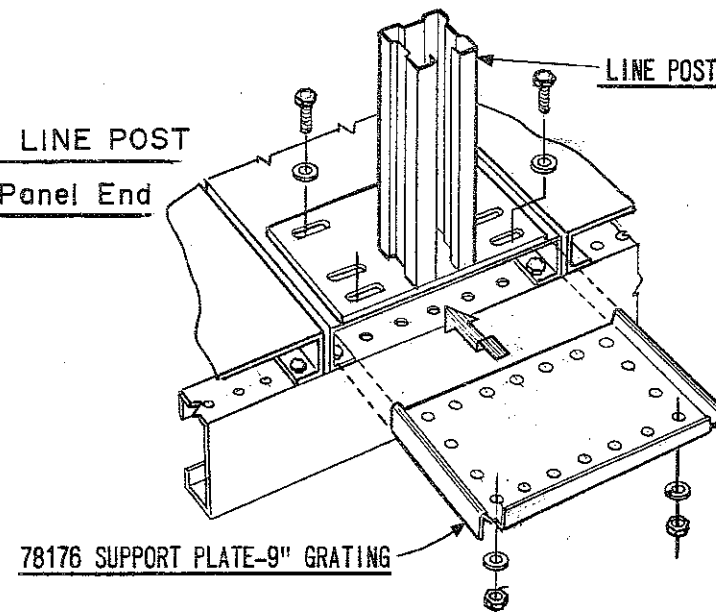
9" Panel Corner



②

### 80002 LINE POST

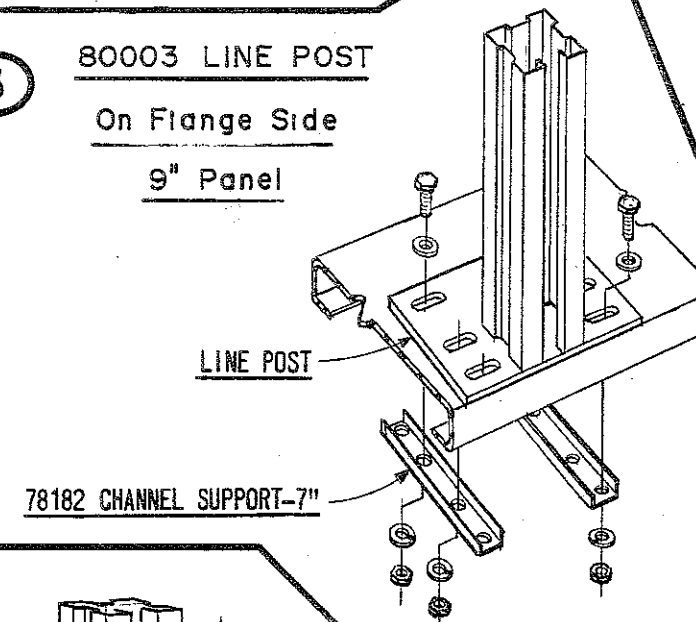
on 9" Panel End



③

### 80003 LINE POST

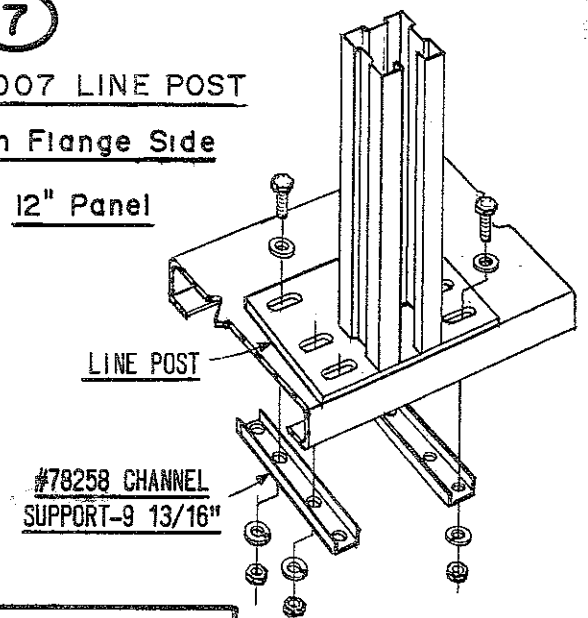
On Flange Side  
9" Panel



⑦

### 80007 LINE POST

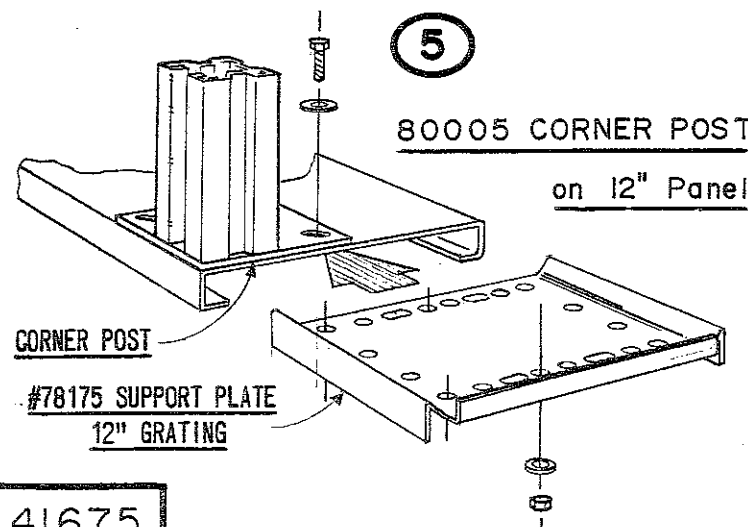
On Flange Side  
12" Panel



⑤

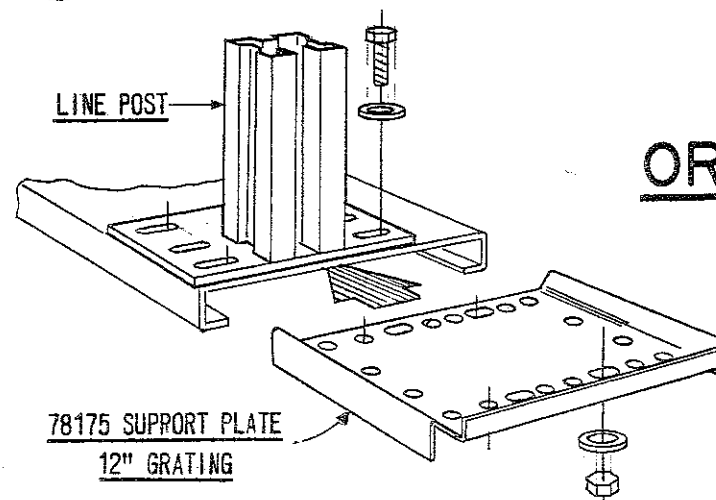
### 80005 CORNER POST

on 12" Panel

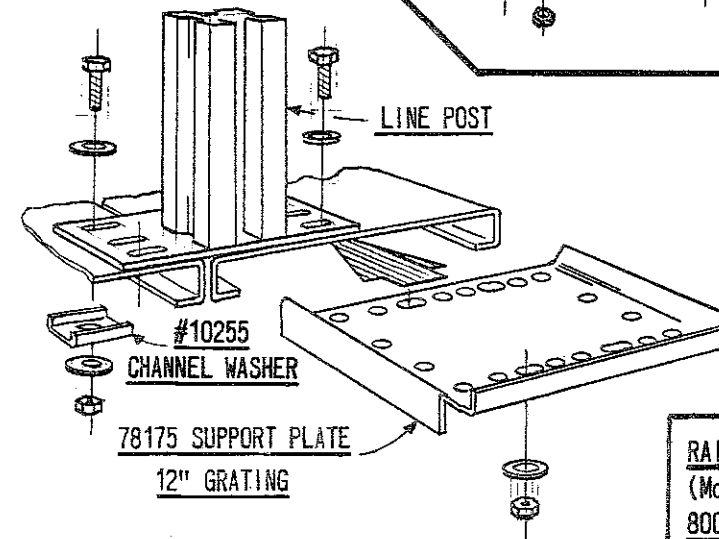


⑥

### 80006 LINE POST on 12" Panel End



OR



RAILING POST FOR OTHER TYPES OF FLOORING  
(Mounting hardware furnished by others)  
80008-CORNER POST    80009-LINE POST