

41009A

EQUIPTO

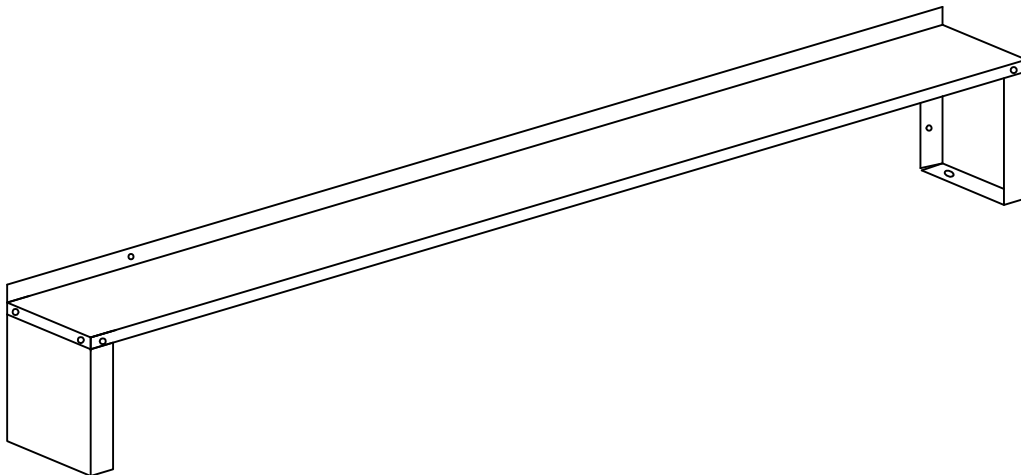
Work Bench Aerial Shelf.
Assembly Instructions

READ INSTRUCTIONS BEFORE ASSEMBLING

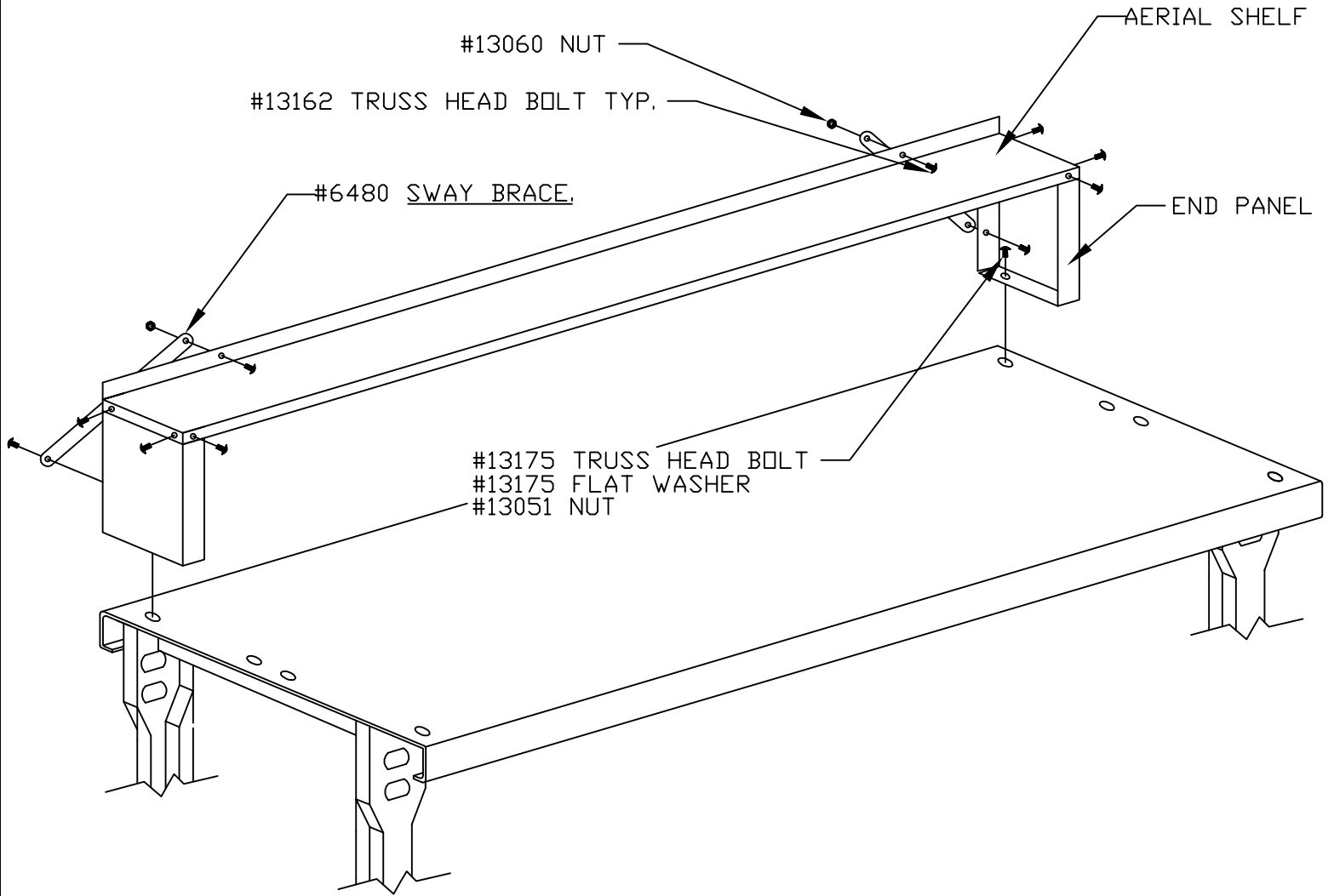
Work Bench Aerial Shelf. Assembly Instructions

TABLE OF CONTENTS

1 OPEN WORKBENCH - STEEL TOP	PAGE 2
2 STEEL TOP OPEN WORKBENCH WITH REAR AND END RAILS	PAGE 3
3 BACK TO BACK OPEN BENCHES STEEL OR WOOD TOPS	PAGE 4
4 AERIAL SHELF ASSEMBLY ON THE WOOD TOP BENCH	PAGE 5
5 ALTERNATE LOCATION OF AERIAL SHELF ON OPEN WORKBENCH	PAGE 6
6 AERIAL SHELF ASSEMBLY ON #200 SERIES CLOSED WORKBENCH	PAGE 7



① OPEN WORKBENCH - STEEL TOP



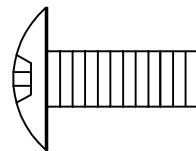
STEP 1. REMOVE THE FLAT HEAD BOLTS (2) AT THE REAR CORNERS OF THE BENCH TOP.

STEP 2. ASSEMBLE THE AERIAL SHELF COMPLETE WITH SWAY BRACES. DO NOT TIGHTEN THE BOLTS SECURELY.

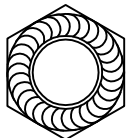
STEP 3. POSITION THE AERIAL SHELF ON THE REAR OF THE BENCH TOP, FLUSH WITH THE BACK FLANGE.

STEP 4. FASTEN THE AERIAL SHELF TO THE BENCH TOP. TIGHTEN ALL BOLTS COMPLETELY.

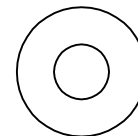
#13154 TRUSS MACH BOLT
5/16-18" X 3/4"



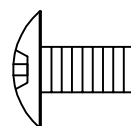
#13051 HEX NUT
5/16-18



#13175 FLAT WASHER
5/16"



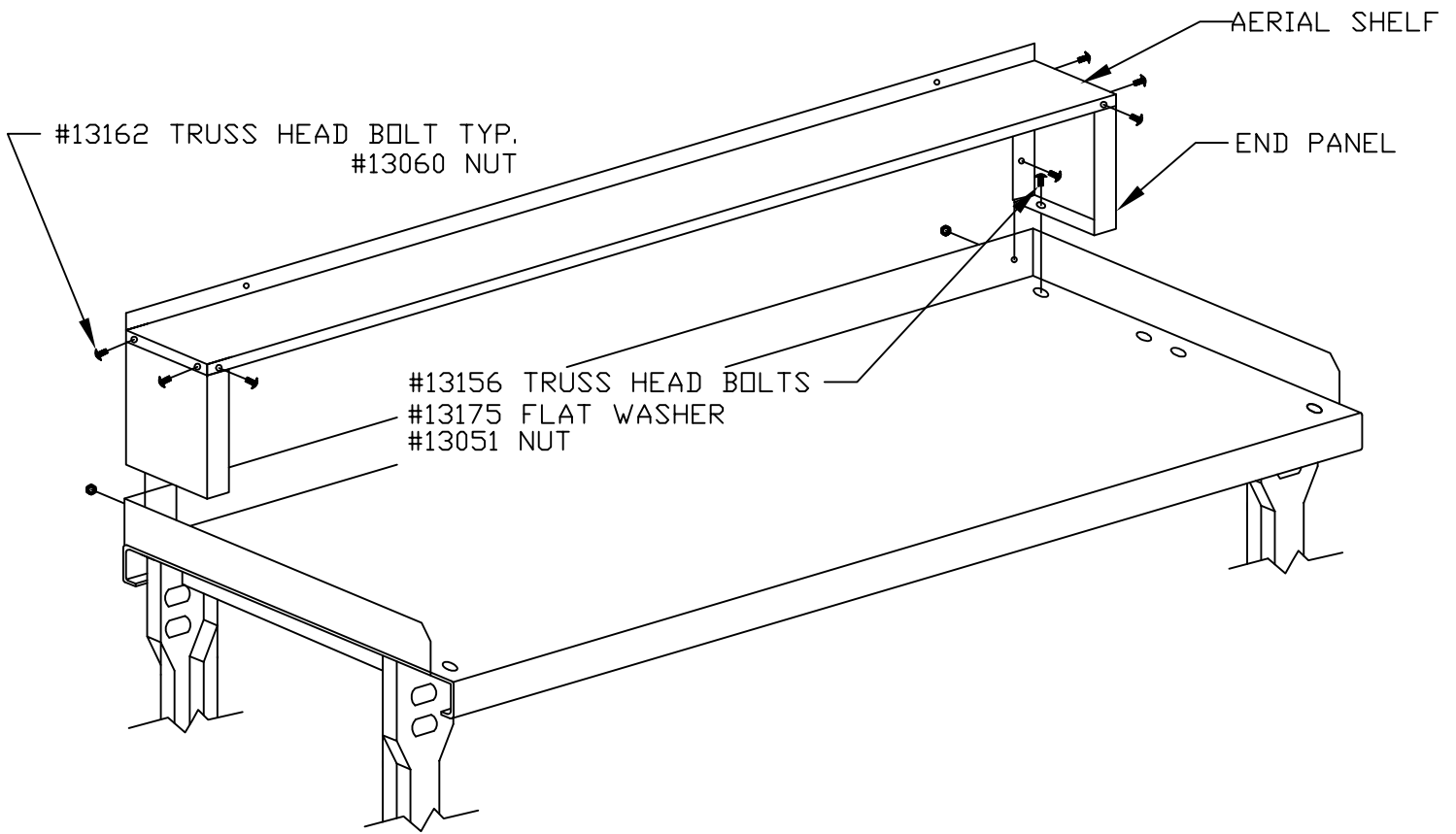
#13162 TRUSS MACH BOLT
1/4-20" X 1/2"



#13060 HEX NUT
1/4-20



② STEEL TOP OPEN WORKBENCH WITH REAR AND END RAILS

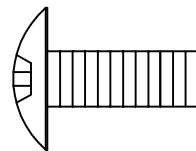


STEP 1. REMOVE THE FLAT HEAD BOLTS (2) AT THE REAR CORNERS OF THE BENCH TOP. REMOVE THE BOLTS HOLDING THE END RAILS TO THE REAR RAIL AT THE REAR CORNERS.

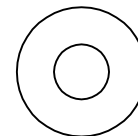
STEP 2. ASSEMBLE THE AERIAL SHELF WITHOUT THE BRACES. TIGHTEN THESE BOLTS SECURELY.

STEP 3. POSITION THE AERIAL SHELF ON THE BENCH TOP AGAINST THE REAR RAIL. SECURE THE AERIAL ASSEMBLY TO TOP.

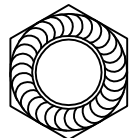
#13154 TRUSS MACH BOLT
5/16-18" X 3/4"



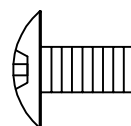
#13175 FLAT WASHER
5/16"



#13051 HEX NUT
5/16-18



#13162 TRUSS MACH BOLT
1/4-20" X 1/2"



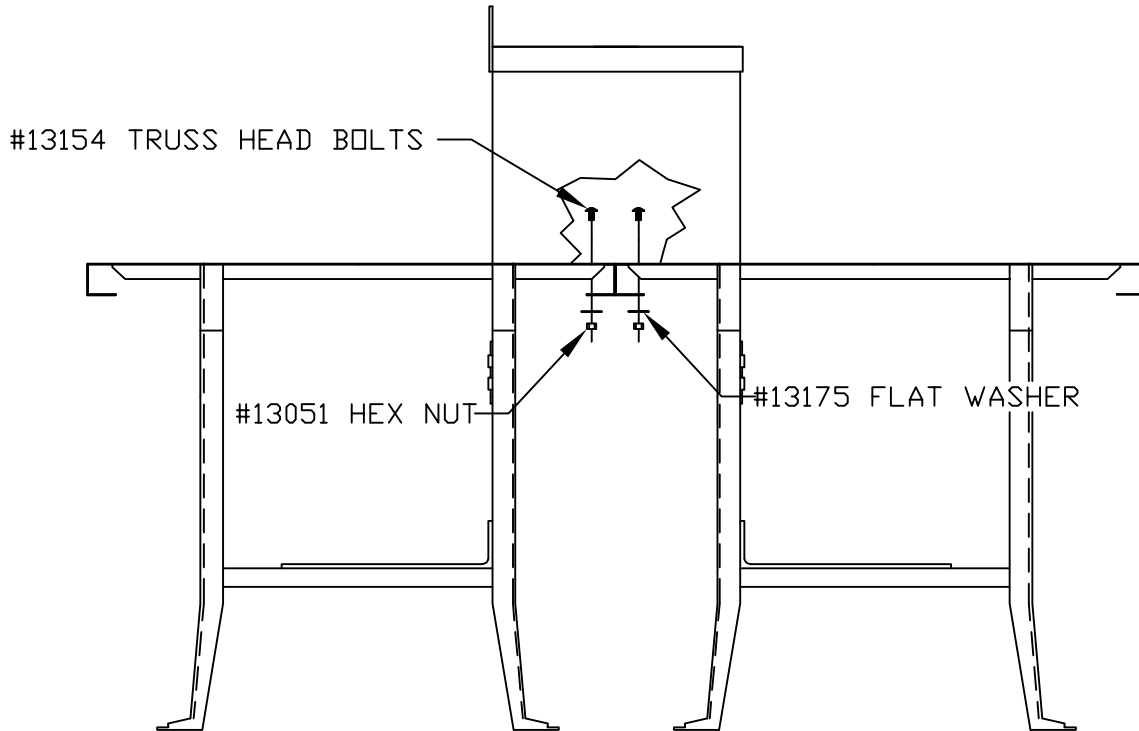
#13060 HEX NUT
1/4-20



③ BACK TO BACK OPEN BENCHES STEEL OR WOOD TOPS

(STEEL TOPS SHOWN)

(AERIAL SHELF ASSEMBLY ON WOOD TOP BENCHES- SEE PG. 5)

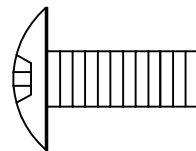


STEP 1. REMOVE THE FLAT HEAD BOLTS (2) AT THE REAR CORNERS OF THE BENCH TOP. REMOVE THE BOLTS HOLDING THE END RAILS TO THE REAR RAIL AT THE REAR CORNERS.

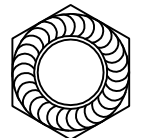
STEP 2. ASSEMBLE THE AERIAL SHELF WITHOUT THE BRACES. TIGHTEN THESE BOLTS SECURELY.

STEP 3. POSITION THE AERIAL SHELF ON THE BENCH TOP AGAINST THE REAR RAIL. RAIL. SECURE THE AERIAL ASSEMBLY TO TOP.

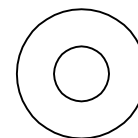
#13154 TRUSS MACH BOLT
5/16-18" X 3/4"



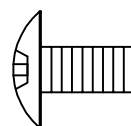
#13051 HEX NUT
5/16-18



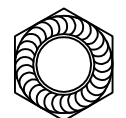
#13175 FLAT WASHER
5/16"



#13162 TRUSS MACH BOLT
1/4-20" X 1/2"

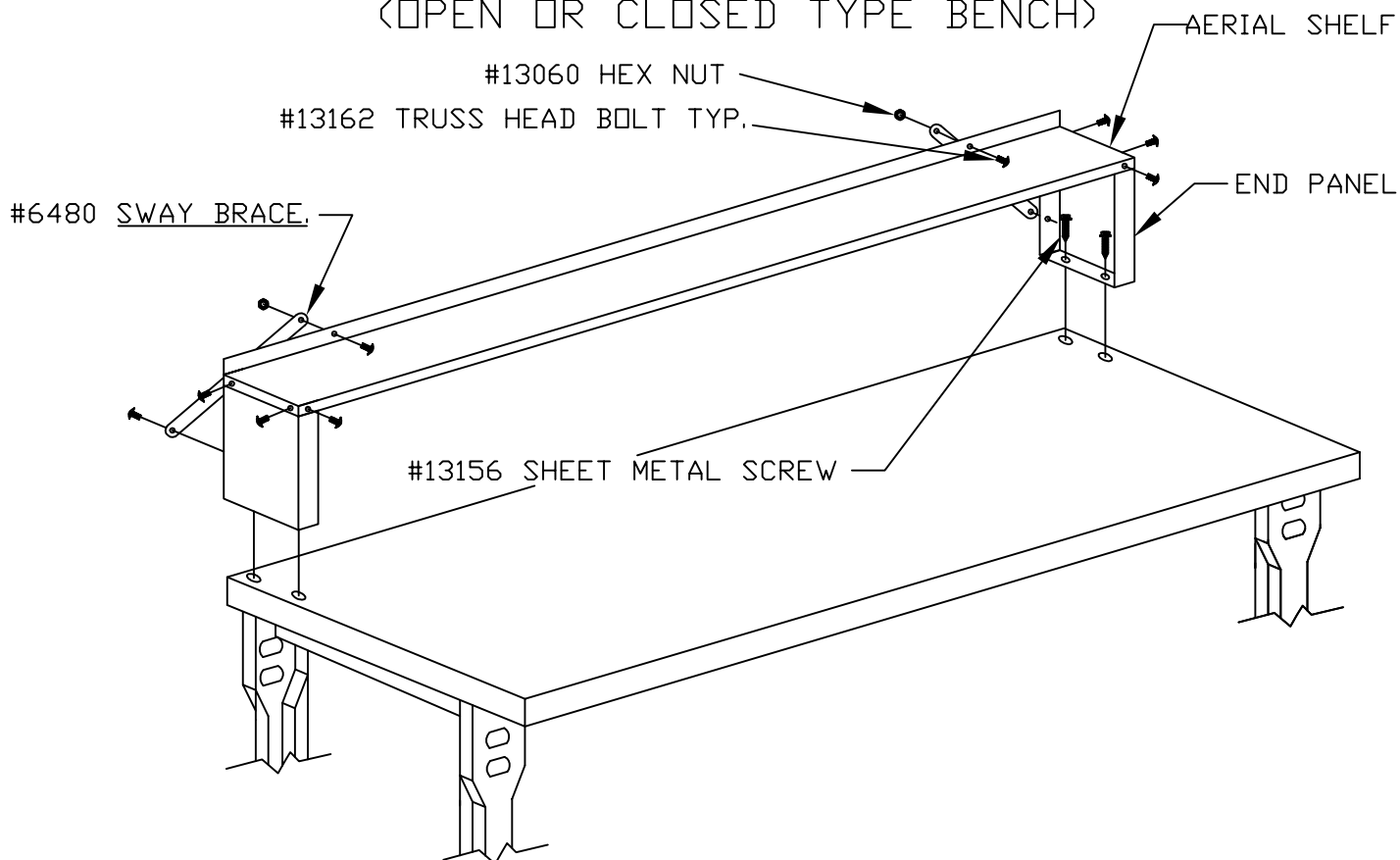


#13060 HEX NUT
1/4-20



④ AERIAL SHELF ASSEMBLY ON THE WOOD TOP BENCH

(OPEN OR CLOSED TYPE BENCH)



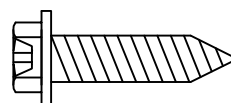
STEP 1. ASSEMBLE THE AERIAL SHELF AS SHOWN, COMPLETE WITH THE SWAY BRACES (2).

STEP 2. POSITION THE AERIAL SHELF ASSEMBLY ON THE WOOD BENCH TOP AT THE DESIRED LOCATION. USING THE LOWER FLANGES OF BOTH END PANELS AS TEMPLATES, MARK THE LOCATION OF THE 5/16" DIA. HOLES ON THE WOOD BENCH TOP. REMOVE THE AERIAL SHELF.

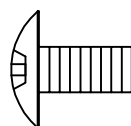
STEP 3. DRILL (4) PILOT HOLES 3/16" DIA. X 1" DEEP IN THE WOOD TOP.

STEP 4. PLACE THE AERIAL SHELF ASSEMBLY IN POSITION ON THE WOOD TOP AND SECURE. TIGHTEN ALL BOLTS AND SCREWS.

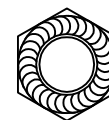
#13156 PHIL HEX WASHER HEAD
SHEET METAL SCREW #14 X 1"



#13162 TRUSS MACH BOLT
1/4-20" X 1/2"



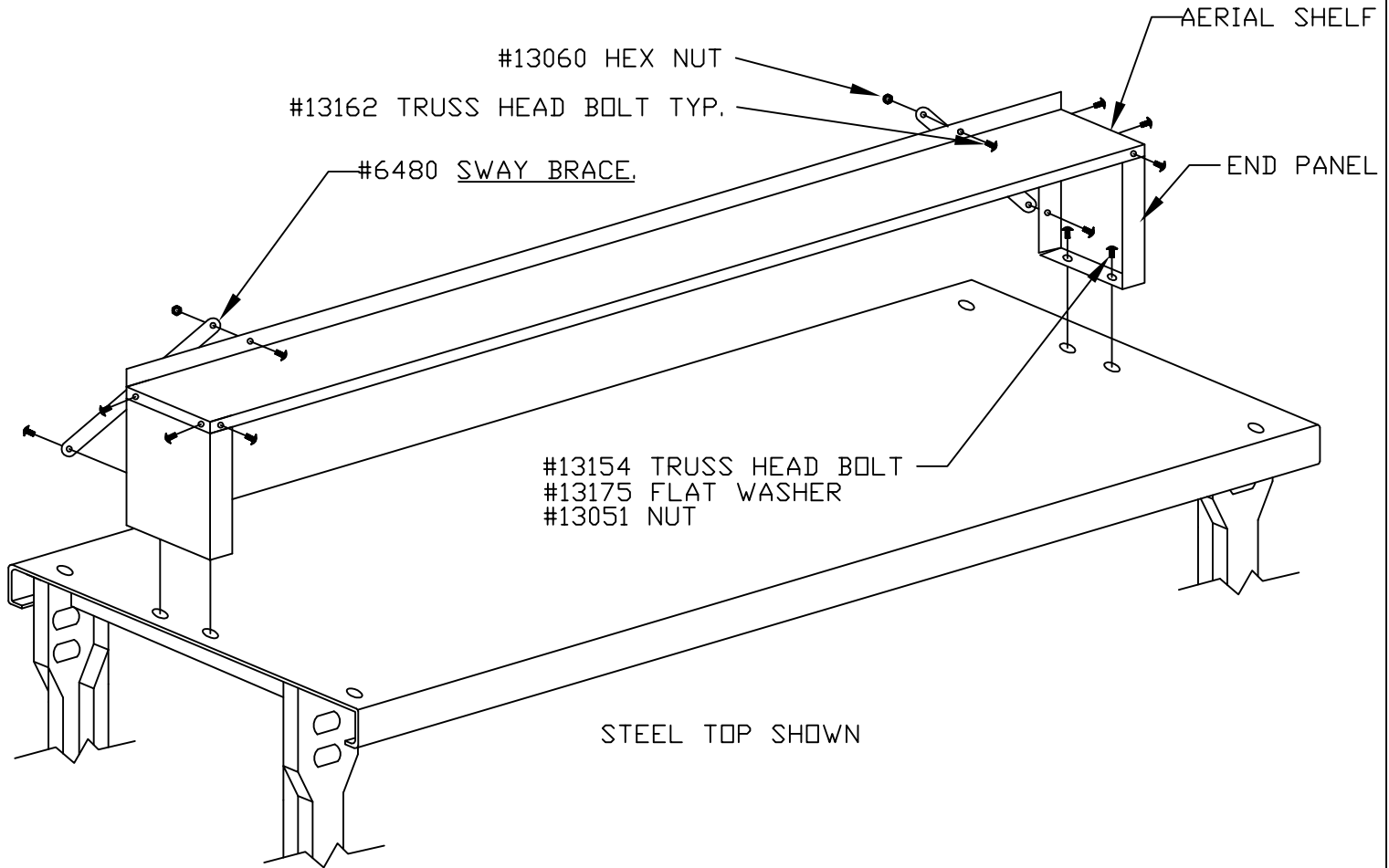
#13060 HEX NUT
1/4-20



⑤ ALTERNATE LOCATION OF AERIAL SHELF ON OPEN WORKBENCH

(STEEL TOPS SHOWN)

(AERIAL SHELF ASSEMBLY ON WOOD TOP BENCHES- SEE PG. 5)

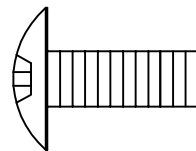


STEP 1. REMOVE THE CENTER FLAT HEAD BOLTS (4) HOLDING THE BENCH TOP TO THE LEGS OF THE BENCH.

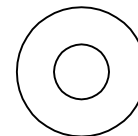
STEP 2. ASSEMBLE THE AERIAL SHELF COMPLETE WITH SWAY BRACES. DO NOT TIGHTEN THE BOLTS SECURELY.

STEP 3. POSITION THE AERIAL SHELF ASSEMBLY OVER THE OPEN HOLES AND FASTEN IN PLACE. TIGHTEN ALL BOLTS SECURELY.

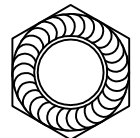
#13154 TRUSS MACH BOLT
5/16-18" X 3/4"



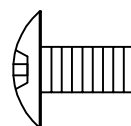
#13175 FLAT WASHER
5/16"



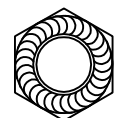
#13051 HEX NUT
5/16-18



#13162 TRUSS MACH BOLT
1/4-20" X 1/2"

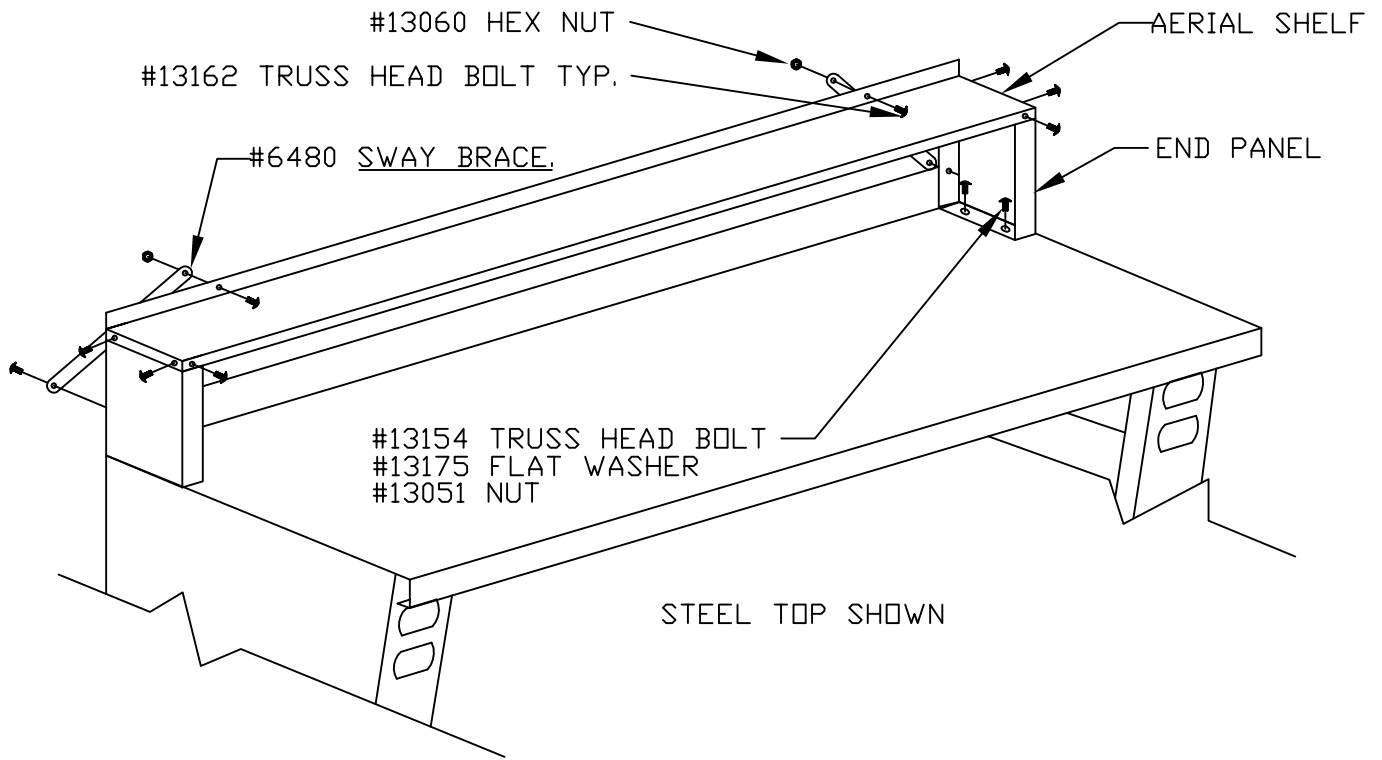


#13060 HEX NUT
1/4-20



⑥ AERIAL SHELF ASSEMBLY ON #200 SERIES CLOSED WORKBENCH

(AERIAL SHELF ASSEMBLY ON WOOD TOP BENCHES- SEE PG. 5)



STEP 1. REMOVE THE FLAT HEAD BOLTS (2) HOLDING THE REAR HALF OF THE STEEL BENCH TOP TO THE UNDER STRUCTURE OF THE BENCH.

STEP 2. ASSEMBLE THE END PANEL TO THE AERIAL SHELF. TIGHTEN BOLTS SECURELY.

STEP 3. PLACE THE AERIAL SHELF ON THE BENCH TOP, AGAINST THE REAR FLANGE OF THE TOP. RAIL. SECURE THE AERIAL ASSEMBLY TO TOP.

STEP 4. FASTEN THE SWAY BRACES TO THE REAR OF THE AERIAL SHELF AND THE REAR FLANGE OF THE BENCH TOP.

